

Pikaia/Pikaia in hide

Designer Angelo Natuzzi

Thanks to its flexible back, this particularly comfortable and ergonomic chair becomes a set of models to meet all requirements. The polyurethane structure is available in different colours, including a new beige colour, ideal for both the home and the contract furnishing sector. Pikaia chairs can also be upholstered in hide, adding prestige and versatility.

Metal finish:

Polished chrome steel

Lacquered steel (white, red, black and beige)

Body finish:

White polyurethane (PO1)

Red polyurethane (PO2)

Black polyurethane (PO3)

Beige polyurethane (PO4)

Hide (C1 → C12)

!*

Chair with seat in hide and chrome frame terminating arm rests in black.

Chair			
Code	Body	Legs	Vol.
05PIK02	polyurethane	lacquered steel	0.36
		polished chrome steel	
05PIK52	hide	lacquered steel	0.36
		polished chrome steel	

2 chairs in each package

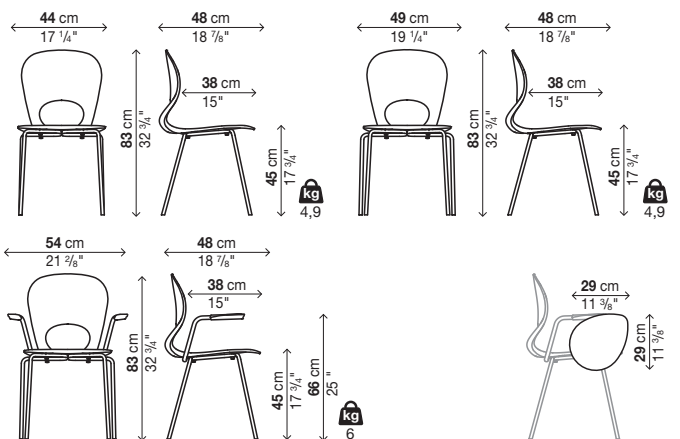
Stacking chair (L) max 4			
Code	Body	Legs	Vol.
05PIK01	polyurethane	lacquered steel	0.36
		polished chrome steel	
05PIK51	hide	lacquered steel	0.36
		polished chrome steel	

4 chairs in each package

Stacking chair with arm rests (L) max 4			
Code	Body	Legs	Vol.
05PIK03	polyurethane	lacquered steel	0.36
		polished chrome steel	
05PIK54	hide	lacquered steel	0.36
		polished chrome steel	*

4 chairs in each package

Optionals			
Code			Vol.
02AGG05	joining element for stacking version		-
02TPK01	ABS writing board for armrest version		-



Pikaia/Pikaia in hide with slide base

Designer Angelo Natuzzi

Thanks to its flexible back, this particularly comfortable and ergonomic chair becomes a set of models to meet all requirements. The polyurethane structure is available in different colours, including a new beige colour, ideal for both the home and the contract furnishing sector. Pikaia chairs can also be upholstered in hide, adding prestige and versatility.

Metal finish:

Polished chrome steel

Lacquered steel (white, red, black and beige)

Body finish:

White polyurethane (PO1)

Red polyurethane (PO2)

Black polyurethane (PO3)

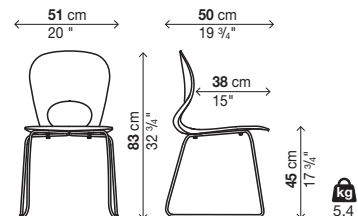
Beige polyurethane (PO4)

Hide (C1 → C12)

Stacking chair (L) max 4			
Code	Body	Legs	Vol.
05PIK04	polyurethane	lacquered steel	0.40
		polished chrome steel	
05PIK44	hide	lacquered steel	0.40
		polished chrome steel	

4 chairs in each package

Optionals			
Code			Vol.
02AGG05	joining element for stacking version		-



Pikaia/Pikaia in hide on castors

Designer Angelo Natuzzi

Thanks to its flexible back, this particularly comfortable and ergonomic chair becomes a set of models to meet all requirements. The polyurethane structure is available in different colours, including a new beige colour, ideal for both the home and the contract furnishing sector. Pikaia chairs can also be upholstered in hide, adding prestige and versatility.

Metal finish:

- Polished chrome steel
- Lacquered steel (white, red, black and beige)

Body finish:

- White polyurethane (PO1)
- Red polyurethane (PO2)
- Black polyurethane (PO3)
- Beige polyurethane (PO4)
- Hide (C1 → C12)

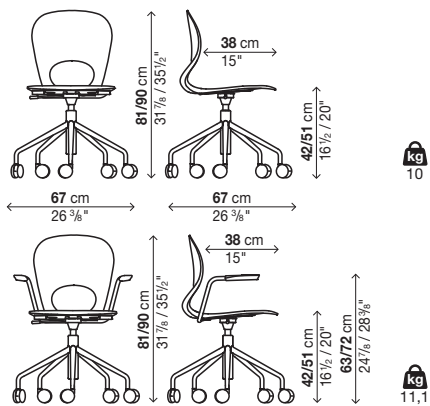
! * Chair with seat in hide and chrome frame terminating arm rests in black.

Chair			
Code	Body	Metal finish	Vol.
05PIK05	polyurethane	lacquered steel	0,43
		polished chrome steel	
05PIK45	hide ★	lacquered steel	0,43
		polished chrome steel	

1 chairs in each package

Chair with arm rests			
Code	Body	Metal finish	Vol.
05PIK06	polyurethane	lacquered steel	0,43
		polished chrome steel	
05PIK46	hide ★	lacquered steel	0,43
		polished chrome steel	*

1 chairs in each package



Pikaia/Pikaia in hide bench system

design Angelo Natuzzi

Thanks to its flexible back, this particularly comfortable and ergonomic chair becomes a set of models to meet all requirements. The polyurethane structure is available in different colours, including a new beige colour, ideal for both the home and the contract furnishing sector. Pikaia chairs can also be upholstered in hide, adding prestige and versatility.

Metal finish:

- Polished chrome steel

Body finish:

- White polyurethane (PO1)
- Red polyurethane (PO2)
- Black polyurethane (PO3)
- Beige polyurethane (PO4)
- Hide (C1 → C12)

Table finish:

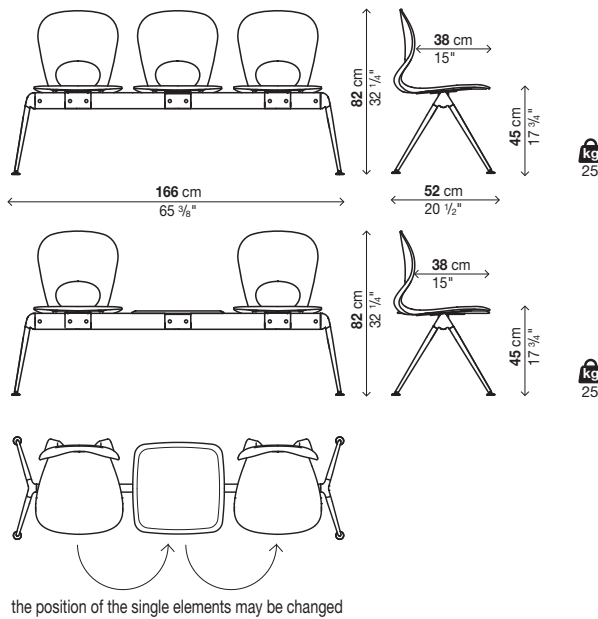
- Grey or black laminate

3 seats			
Code	Body	Metal finish	Vol.
05PIK10	polyurethane	polished chrome steel	0,43
05PIK47	hide ★	polished chrome steel	0,43

1 bench in each package

2 seats + table			
Code	Body	Metal finish	Vol.
05PIK20	polyurethane	polished chrome steel	0,43
05PIK49	hide ★	polished chrome steel	0,43

1 bench in each package



Finishes

Finiture metallo

Metal finish / Metallausführungen / Acabados metal / Finitions métal



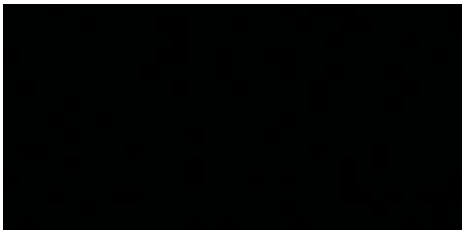
Acciaio cromato / Polished chrome steel / Stahl glänzend
verchromt / Acero cromado / Acier chromé



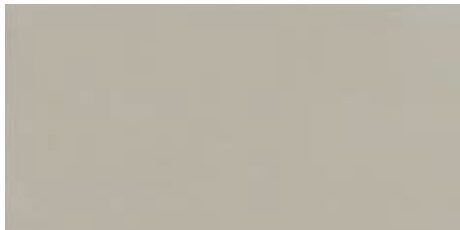
Bianco / White / Weiß / Blanco / Blanc



Rosso / Red / Rot / Rojo / Rouge



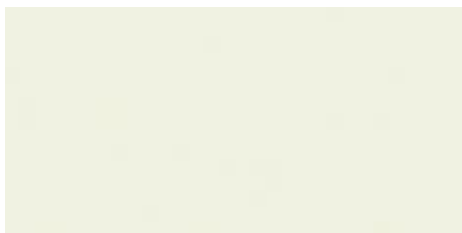
Nero / Black / Schwarz / Negro / Noir



Beige / Beige / Beige / Beige / Beige

Finiture poliuretano

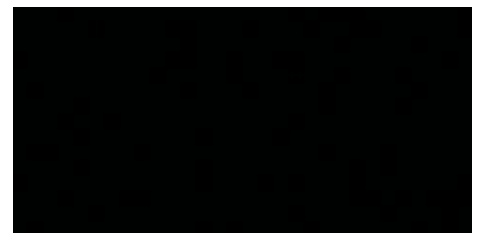
Polyurethane finish / Ausführung Polyurethan / Acabados poliuretano / Finitions polyuréthane



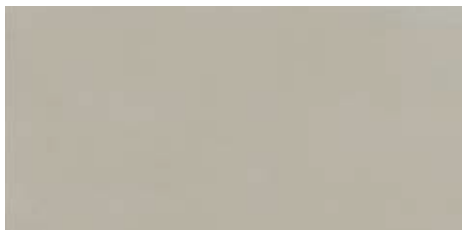
PO1 Bianco / White / Weiß / Blanco / Blanc



PO2 Rosso / Red / Rot / Rojo / Rouge



PO3 Nero / Black / Schwarz / Negro / Noir



PO4 Beige / Beige / Beige / Beige / Beige

Finishes

Finiture cuoio
Hide finishes / Ausführungen Kernleder / Acabados cuero / Finitions cuir

