

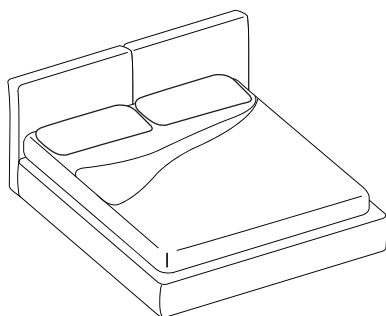


## Flex

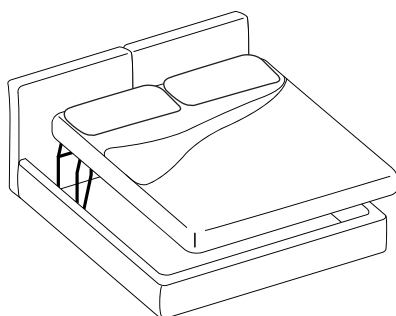
Elementary shapes and substantial thickness create a bed that inspires comfort and well-being just by looking at it. Pinched seams create a slim border that enhances the geometric lines of the headboard. Headboard and bed frame in fabric, leather or eco-leather, matching or contrast pinched seam. Available in versions with or without storage base.

Elementary shapes and substantial thickness create a bed that inspires comfort and well-being just by looking at it. Pinched seams create a slim border that enhances the geometric lines of the headboard. Testiera e giroletto in tessuto, pelle o ecopelle, bordo perimetrale colore o a contrasto. Disponibile nelle versioni con o senza contenitore.

## Dimensions



	Bed base	Internal dimesions	External dimensions
	140x200 55 1/8 x 78 5/8	142x202 55 7/8 x 79 4/8	L 174 H 95 P 232 W 68 4/8 H 37 3/8 D 91 3/8
	150x200 59x78 5/8	152x202 59 7/8 x 79 4/8	L 184 H 95 P 232 W 72 4/8 H 37 3/8 D 91 3/8
	160x200 63x78 5/8	162x202 63 5/8 x 79 4/8	L 194 H 95 P 232 W 76 3/8 H 37 3/8 D 91 3/8
	180x200 70 7/8 x 78 5/8	182x202 71 5/8 x 79 4/8	L 214 H 95 P 232 W 84 2/8 H 37 3/8 D 91 3/8
AU – USA QS	153x203 60 2/8 x 79 7/8	155x205 61x80 5/8	L 197 H 95 P 237 W 77 4/8 H 37 3/8 D 93 2/8
AU KS	183x203 72x79 7/8	185x205 72 7/8 x 80 5/8	L 217 H 95 P 237 W 85 3/8 H 37 3/8 D 93 2/8
USA KS	193x203 76x79 7/8	195x205 76 5/8 x 80 5/8	L 227 H 95 P 237 W 89 3/8 H 37 3/8 D 93 2/8



	Bed base + storage	Internal dimesions	External dimensions
	140x200 55 1/8 x 78 5/8	142x202 55 7/8 x 79 4/8	L 174 H 95 P 232 W 68 4/8 H 37 3/8 D 91 3/8
	150x200 59x78 5/8	152x202 59 7/8 x 79 4/8	L 184 H 95 P 232 W 72 4/8 H 37 3/8 D 91 3/8
	160x200 63x78 5/8	162x202 63 5/8 x 79 4/8	L 194 H 95 P 232 W 76 3/8 H 37 3/8 D 91 3/8
	180x200 70 7/8 x 78 5/8	182x202 71 5/8 x 79 4/8	L 214 H 95 P 232 W 84 2/8 H 37 3/8 D 91 3/8

## FINISHES

### Alveo fabric



111



130



200



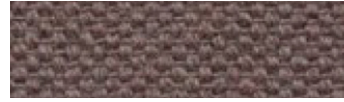
430



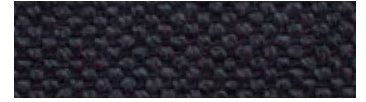
600



602



603



632



705



802



901



902

Composition: 100% recycled cotton  
Abrasion: app. 25.000 Martindale  
Cleaning and care:



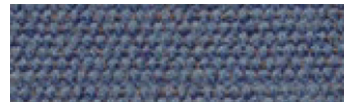
### Biacco fabric



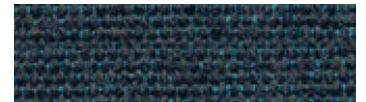
53



14



06



13



11



15

Composition: 75% recycled CO, 25% PL  
Abrasion: app. 40.000 Martindale  
Cleaning and care:



### Borgo fabric



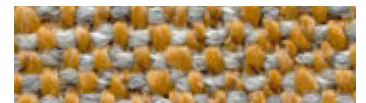
15



17



37



92



98



93



25



76



137

Composition: PC 51% , LI 11%, PL 11%,  
VI 11%, CO 16%  
Abrasion: app. 25.000 Martindale  
Cleaning and care:





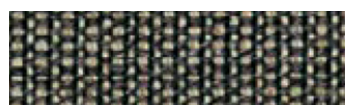
## Canvas 2 (Kvadrat) fabric



114



124



134



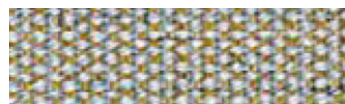
154



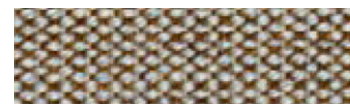
174



216



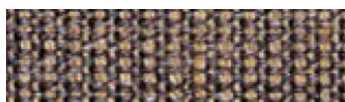
224



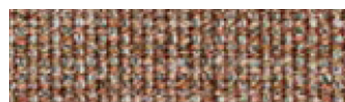
244



254



264



356



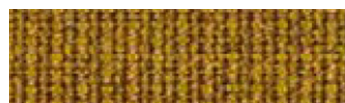
364



374



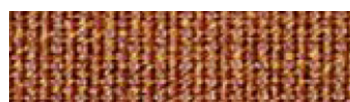
414



424



446



454



546



556



566



576



614



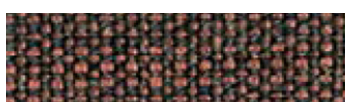
644



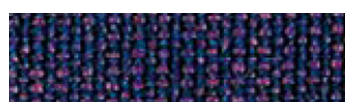
654



666



674



684



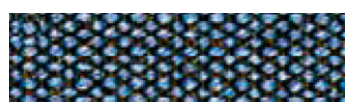
694



716



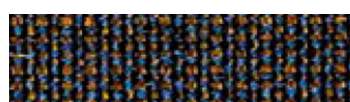
726



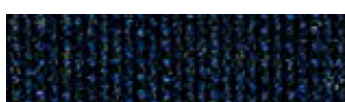
734



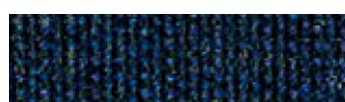
746



764



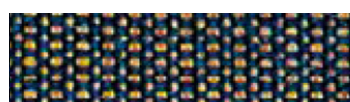
786



794



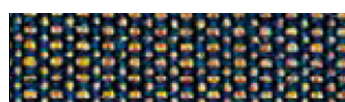
836



854



926



854



926



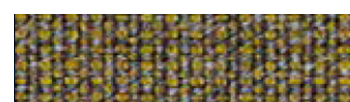
936



946



954



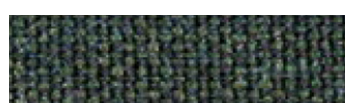
964



974



984



996

Design: Giulio Ridolfo  
Composition: 90% new wool,  
worsted, 10% nylon

Abrasion: app. 100.000 Martindale  
Cleaning and care:





## FINISHES

### Divina Melange 3 (Kvadrat) fabric

			
120	147	170	180
			
227	237	260	277
			
280	367	427	457
			
467	471	517	527
			
547	557	567	571
			
581	597	617	620
			
647	677	687	731
			
747	757	777	787
			
821	871	917	937
			
967	977		

Design: Finn Sködt  
Composition: 100% new wool  
Abrasion: app. 45.000 Martindale  
Cleaning and care:



## Field 2 (Kvadrat) fabric



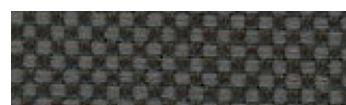
123



132



142



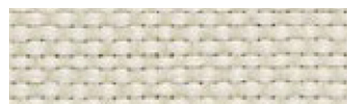
173



182



192



222



233



242



343



373



443



463



623



643



662



663



673



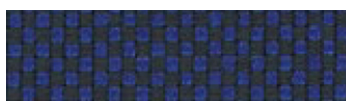
693



723



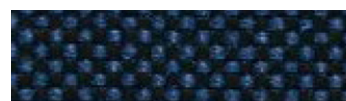
733



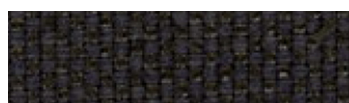
763



773



782



793



843



933



943



963



983

Design: Alfredo Häberli  
Composition: 100% Trevira CS  
Abrasion: app. 100.000 Martindale

Cleaning and care:



## Greto fabric



05



06



11



16



21

Composition: PL 33% , PC 25%,  
VI 23%, CO 10%, LI 9%  
Abrasion: app. 50.000 Martindale

Cleaning and care:





## FINISHES

### Hallingdal 65 (Kvadrat) fabric

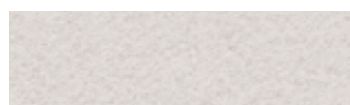


Design: Nanna Ditzel  
Composition: 70% new wool,  
30% viscose  
Abrasion: app. 100.000 Martindale  
Cleaning and care:



## FINISHES

### Hero 2 (Kvadrat) fabric



102



152



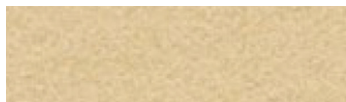
162



182



192



202



212



242



312



352



372



392



422



432



512



542



552



582



622



652



662



672



732



742



752



772



782



862



882



912



932



942



962

Composition: 96% new wool, 4% nylon

Abrasion: app. 45.000 Martindale

Cleaning and care:





## Merit (Maharam) fabric



001



002



003



004



005



006



007



008



009



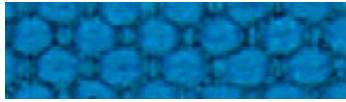
010



011



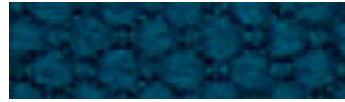
012



013



014



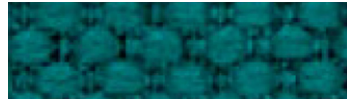
015



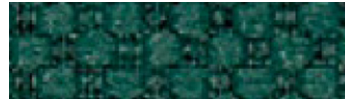
016



017



018



019



020



021



022



023



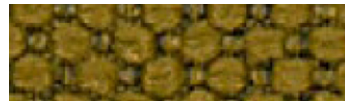
024



025



026



027



028



029



030



031



032



033



034



035



036



037



038



039



040



041



042



043

Composition: 76% post-consumer recycled polyester, 24% polyester  
 Abrasion: app. 85.000 Martindale  
 Cleaning and care:





## FINISHES

### Moss (Sahco) fabric



0001



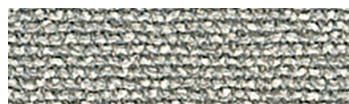
0002



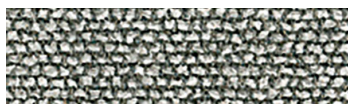
0003



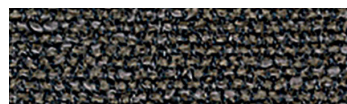
0004



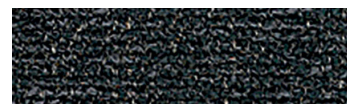
0005



0006



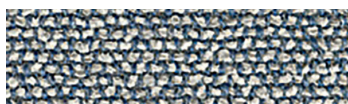
0007



0008



0009



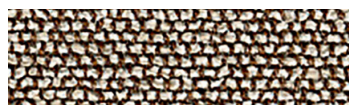
0010



0011



0012



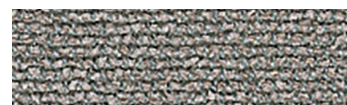
0013



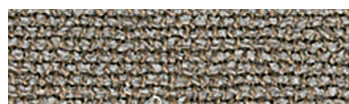
0014



0015



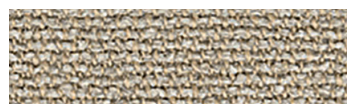
0016



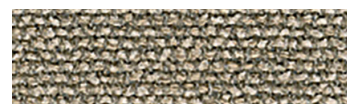
0017



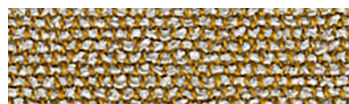
0018



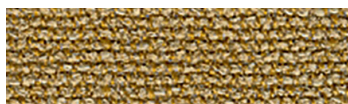
0019



0020



0021



0022

Design: Vincent Van Duysen  
Composition: 52% Cotton,  
22% Viscose, 14% Acrylic,  
6% Linen, 3% Polyester, 3% Nylon  
Weight: 920 g/lin.m  
Durability: 50.000 Martindale

Pilling: 4-5  
Lightfastness: 6-7  
Cleaning and care:  
⊗ ⊗ ⊗ ⊗ ⊗

### Orsetto (ONE Mario Sirtori) fabric



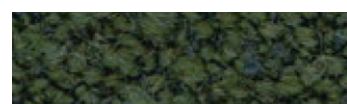
01/2



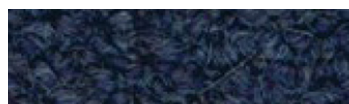
98/21



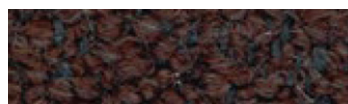
02/26



98/18



98/20



98/16

Composition: 34% Viscose, 33%  
Acrylic, 17% Wool, 8% Polyester, 4%  
Flax, 4% Cotton  
Abrasion: app. 80.000 Martindale  
Cleaning and care:

⊗ ⊗ ⊗ ⊗ ⊗

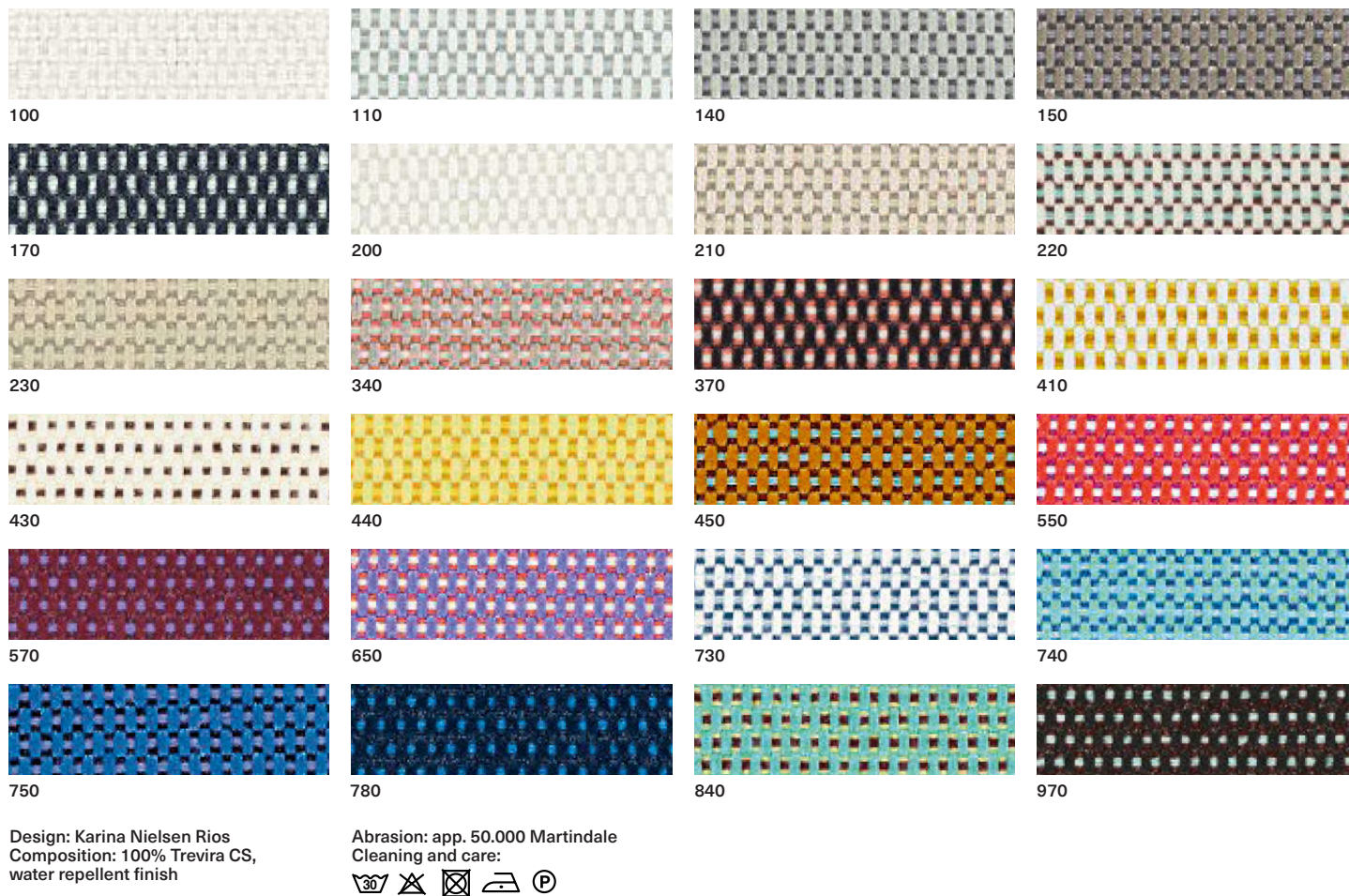


## FINISHES

### Parigi fabric



### Patio (Kvadrat) fabric





## Remix 3 (Kvadrat) fabric



Composition: 90% new wool,  
worsted, 10% nylon  
Abrasion: app. 100.000 Martindale

Cleaning and care:





FINISHES

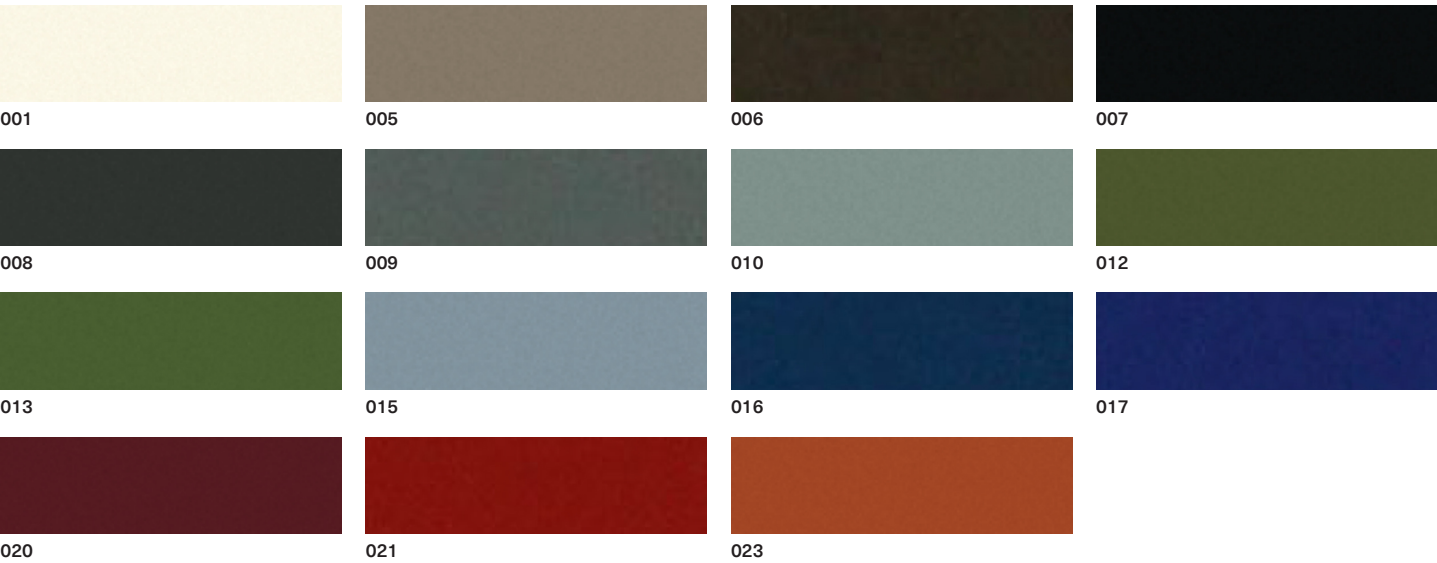
RePo 3D fabric



Composition: 98% recycled polyester,  
2% LYCRA® elastomer  
Abrasion: > 350.000 cicli, ISO 12947-2  
Cleaning and care:



Scuba (Maharam) fabric



Composition: 100% polyurethane  
(surface), 100% polyester (backing)  
Abrasion: app. 100.000 Martindale  
Cleaning and care:



## Steelcut Trio 3 (Kvadrat) fabric



Design: Frans Dijkmeijer  
and Giulio Ridolfo  
Composition: 90% new wool,  
worsted, 10% nylon  
Abrasion: app. 100.000 Martindale  
Cleaning and care:





## FINISHES

### Stipa fabric



03



05



02



04



31



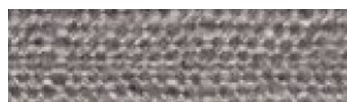
46



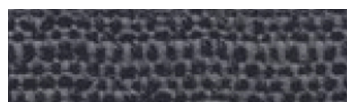
150



16



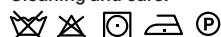
06



07

Composition: VI 34% , CO 31%, LI 15%,  
PC 13%, PL 7%  
Abrasion: app. 25.000 Martindale

Cleaning and care:



### Vello fabric



01



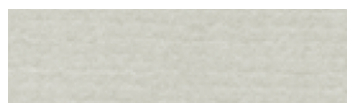
03



05



07



29



28



2002



26



14



70



2007



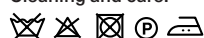
58



1041

Composition: 100% Cotton  
Abrasion: app. 70.000 Martindale

Cleaning and care:



### Verso fabric



01



03



51



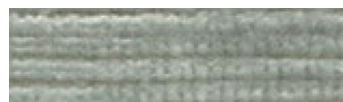
05



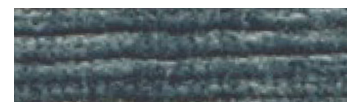
09



30



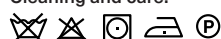
10



15

Composition: VI 34% , CO 31%, LI 15%,  
PC 13%, PL 7%  
Abrasion: app. 25.000 Martindale

Cleaning and care:



# FINISHES

## Elmosoft IX (Elmo) semi-aniline leather

					
00100	00109	00118	01003	01021	01037
					
01061	01085	05011	11033	11049	11073
					
13048	13072	13087	16003	17027	22024
					
22030	33001	33004	35126	43054	44012
					
45065	54035	55002	71017	75010	77127
					
77158	78023	91102	93068	93099	93129
					
95006	97038	98015	98047	99999	01043
					
02119	02122	05029	05145	07006	08021
					
08038	08055	08057	08124	11056	11152
					
16377	33077	43283	45035	46053	54021
					
54033	66006	75011	75014	77074	77237
					
87021	88019	93109	98087		



Neocoast (Elmo) pigmented & printed leather

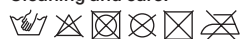
			
99076	91097	91100	71010
			
18008	12097	02061	00114
			
93090	98016	43041	43084
			
95042	55058	45024	44015
			
77022	77035	98043	88017

## FINISHES

### Valencia (Spradling) synthetic leather

							
107-0001	107-0002	107-0020	107-0033	107-0034	107-0035	107-1001	107-1020
							
107-1048	107-1049	107-1050	107-2001	107-2002	107-2020	107-2021	107-2062
							
107-2074	107-2075	107-2106	107-2107	107-2108	107-2109	107-2110	107-2111
							
107-2112	107-2113	107-2114	107-2115	107-2116	107-2117	107-2118	107-2119
							
107-3001	107-3067	107-3068	107-3069	107-4001	107-4002	107-4003	107-4020
							
107-4040	107-4041	107-4042	107-4043	107-4044	107-4045	107-4052	107-5001
							
107-5002	107-5041	107-5056	107-5057	107-5065	107-5069	107-6002	107-6003
							
107-6012	107-6013	107-6019	107-6020	107-7001	107-8020	107-8032	107-9001
							
107-9035	107-9607						

Composition: Topcoat 100% vinyl,  
backing 100% polyester Hi-Loft  
Abrasion: app. 300.000 Martindale  
Cleaning and care:



Shades of colour cannot be  
reproduced exactly on printed paper.  
MD House Srl is entitled to make  
modifications at any time and without  
prior notice.

Nella stampa su carta la tonalità dei  
colori non può essere riprodotta  
fedelmente. MD House Srl si riserva  
la facoltà di apportare modifiche in  
qualsiasi momento e senza preavviso.