

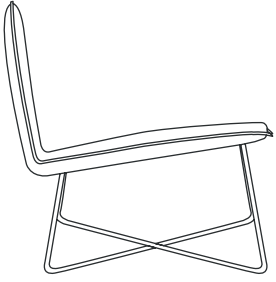


Libro

The Libro armchair has a slender metal structure and a particularly inviting tilted shape. The seat cushion adds extra comfort and ergonomic appeal to the chair, maintaining the elegance of its design. Base structure matt lacquer. Upholstery in fabric, leather or eco-leather.

La poltrona Libro ha una sottile struttura metallica ed una forma inclinata che si rivela particolarmente accogliente. Il cuscino di seduta aggiunge ulteriore comfort ed ergonomia alla seduta, mantenendo l'eleganza del suo design. Base struttura laccato opaco Rivestimento in tessuto, pelle o ecopelle.

Dimensions



L 72 H 64 P 72
W 28³/₈ H 25²/₈ D 28³/₈

FINISHES

Matt lacquer (base only)

			
Neve	Pomice	Latte	Canapa
			
Avena	Beige	Corda	Lino
			
Tufo	Visone	Spago	Fango
			
Grafite	Colombo	Basalto	Piombo
			
Grigio	Asfalto	Nero	Piovvia
			
Argilla	Ferro	Ambra	Miele
			
Rosso Rubino	Cameo	Conchiglia	Oliva
			
Alpi	Notte		

FINISHES

Alveo fabric



111



130



200



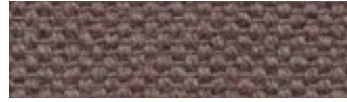
430



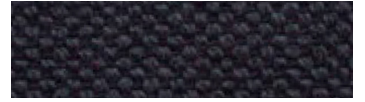
600



602



603



632



705



802



901



902

Composition: 100% recycled cotton
Abrasion: app. 25.000 Martindale
Cleaning and care:



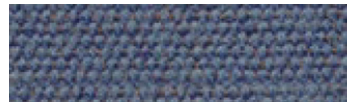
Biacco fabric



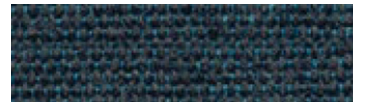
53



14



06



13



11



15

Composition: 75% recycled CO, 25% PL
Abrasion: app. 40.000 Martindale
Cleaning and care:



Borgo fabric



15



17



37



92



98



93



25



76



137

Composition: PC 51% , LI 11%, PL 11%,
VI 11%, CO 16%
Abrasion: app. 25.000 Martindale
Cleaning and care:

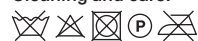


Canvas 2 (Kvadrat) fabric



Design: Giulio Ridolfo
 Composition: 90% new wool,
 worsted, 10% nylon

Abrasion: app. 100.000 Martindale
 Cleaning and care:



FINISHES

Divina Melange 3 (Kvadrat) fabric



Design: Finn Sködt
 Composition: 100% new wool
 Abrasion: app. 45.000 Martindale
 Cleaning and care:



FINISHES

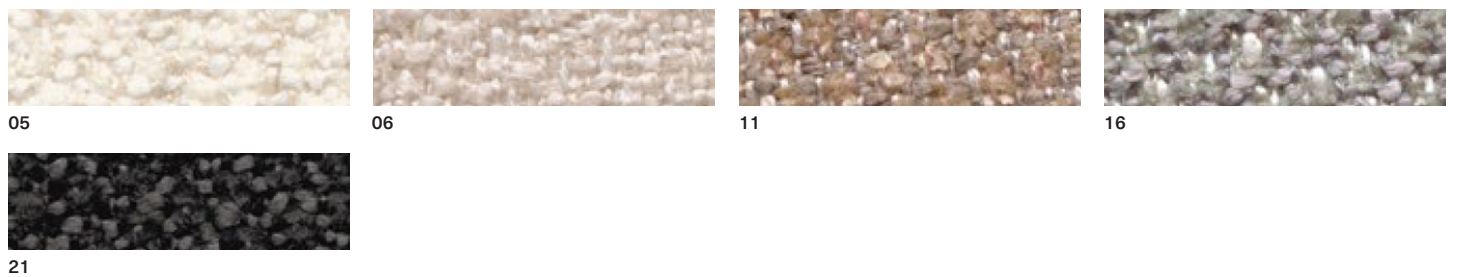
Field 2 (Kvadrat) fabric



Design: Alfredo Häberli
 Composition: 100% Trevira CS
 Abrasion: app. 100.000 Martindale

Cleaning and care:

Greto fabric




Composition: PL 33% , PC 25%,
 VI 23%, CO 10%, LI 9%
 Abrasion: app. 50.000 Martindale

Cleaning and care:

FINISHES

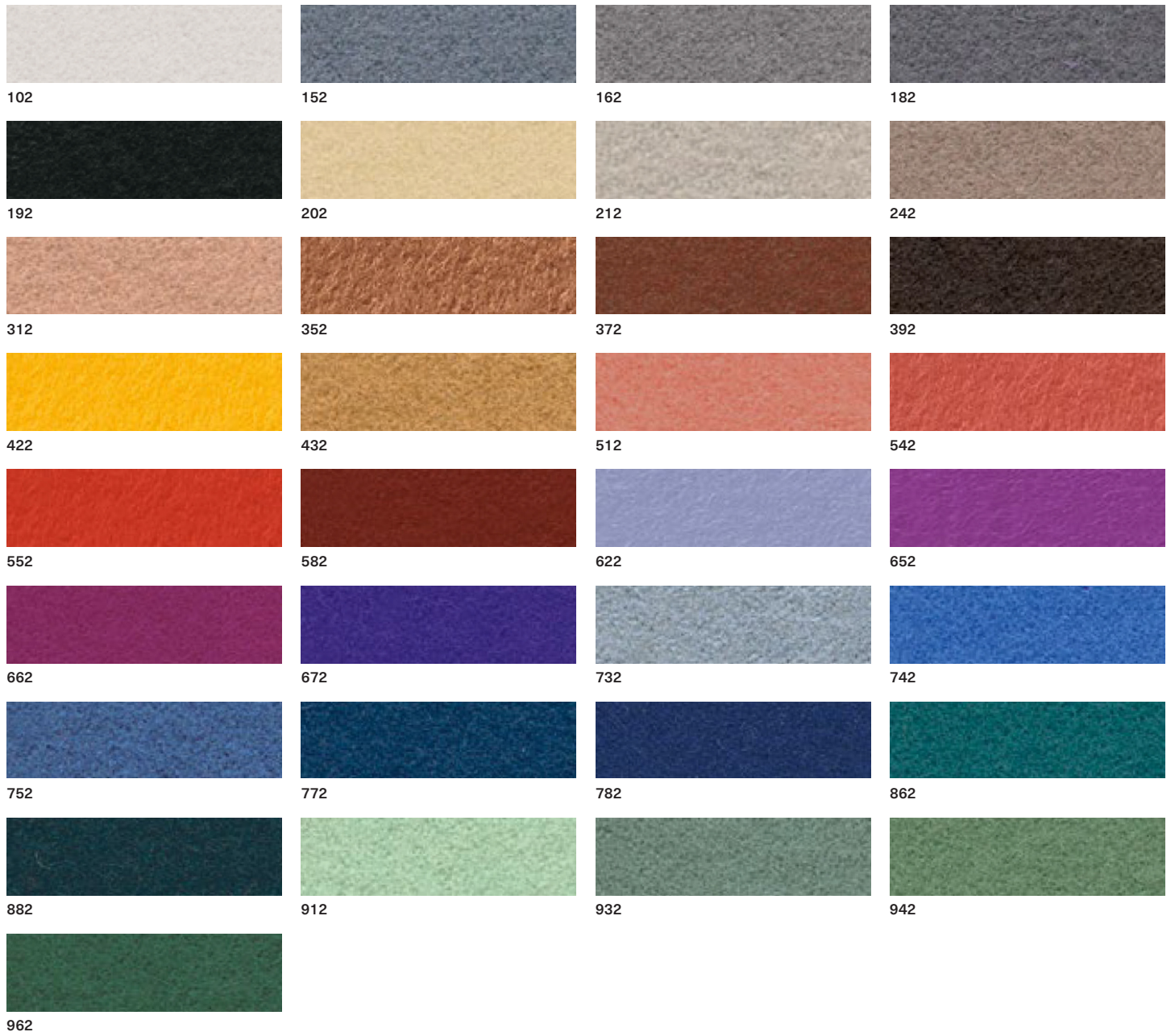
Hallingdal 65 (Kvadrat) fabric



Design: Nanna Ditzel
 Composition: 70% new wool,
 30% viscose
 Abrasion: app. 100.000 Martindale
 Cleaning and care:


FINISHES

Hero 2 (Kvadrat) fabric



Composition: 96% new wool, 4% nylon
 Abrasion: app. 45.000 Martindale
 Cleaning and care:



Merit (Maharam) fabric



Composition: 76% post-consumer recycled polyester, 24% polyester
 Abrasion: app. 85.000 Martindale
 Cleaning and care:



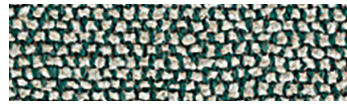
Moss (Sahco) fabric



0001



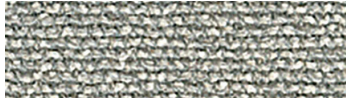
0002



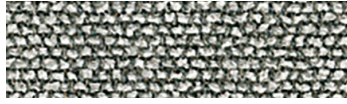
0003



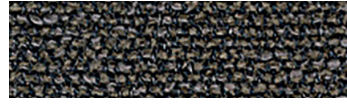
0004



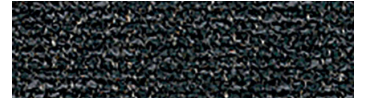
0005



0006



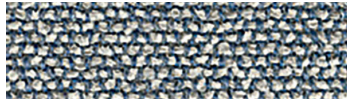
0007



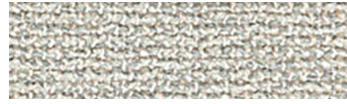
0008



0009



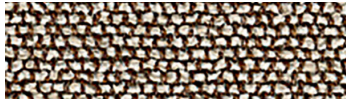
0010



0011



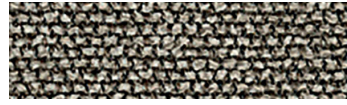
0012



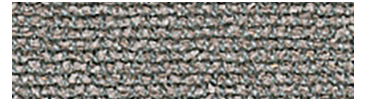
0013



0014



0015



0016



0017



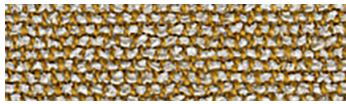
0018



0019



0020



0021



0022

Design: Vincent Van Duysen
Composition: 52% Cotton,
22% Viscose, 14% Acrylic,
6% Linen, 3% Polyester, 3% Nylon
Weight: 920 g/lin.m
Durability: 50.000 Martindale

Pilling: 4-5
Lightfastness: 6-7
Cleaning and care:
⊗ ⊗ ⊗ ⊗ ⊗

Orsetto (ONE Mario Sirtori) fabric



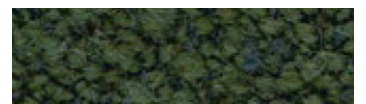
01/2



98/21



02/26



98/18



98/20



98/16

Composition: 34% Viscose, 33%
Acrylic, 17% Wool, 8% Polyester, 4%
Flax, 4% Cotton
Abrasion: app. 80.000 Martindale
Cleaning and care:

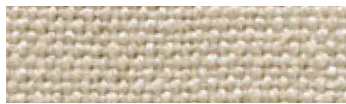
⊗ ⊗ ⊗ ⊗ ⊗

FINISHES

Parigi fabric



50



39



41



37



07



06



13



09



10



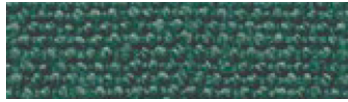
12



34



33



30



32



26



36



27



28

Composition: 100% linen
Abrasion: app. 30.000 Martindale

Cleaning and care:

Patio (Kvadrat) fabric



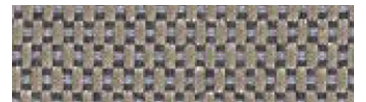
100



110



140



150



170



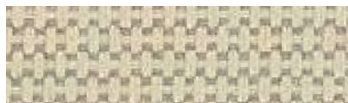
200



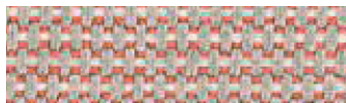
210



220



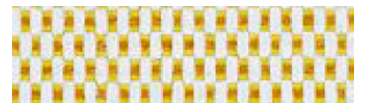
230



340



370



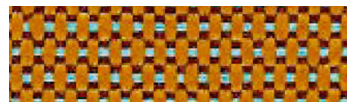
410



430



440



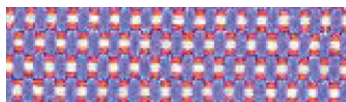
450



550



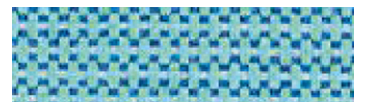
570



650



730



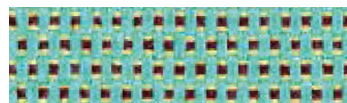
740



750



780



840



970

Design: Karina Nielsen Rios
Composition: 100% Trevira CS,
water repellent finish

Abrasion: app. 50.000 Martindale
Cleaning and care:

FINISHES

Remix 3 (Kvadrat) fabric



Composition: 90% new wool,
worsted, 10% nylon
Abrasion: app. 100.000 Martindale

Cleaning and care:



FINISHES

RePo 3D fabric



BIT 105



BIT 106



BIT 109



BIT 107



BIT 108



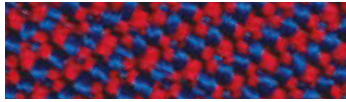
BIT 804



BIT 305



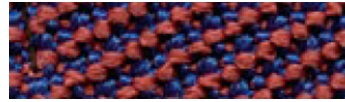
BIT 807



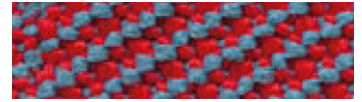
BIT 307



BIT 308



BIT 703



BIT 306



BIT 305



BIT 705



BIT 605



BIT 600

Composition: 98% recycled polyester,
2% LYCRA® elastomer
Abrasion: > 350.000 cicli, ISO 12947-2
Cleaning and care:



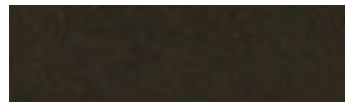
Scuba (Maharam) fabric



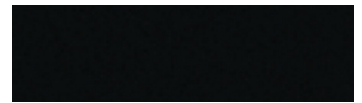
001



005



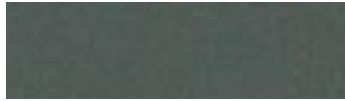
006



007



008



009



010



012



013



015



016



017



020



021



023

Composition: 100% polyurethane
(surface), 100% polyester (backing)
Abrasion: app. 100.000 Martindale
Cleaning and care:



Steelcut Trio 3 (Kvadrat) fabric



Design: Frans Dijkmeijer
and Giulio Ridolfo
Composition: 90% new wool,
worsted, 10% nylon
Abrasion: app. 100.000 Martindale
Cleaning and care:



FINISHES

Stipa fabric



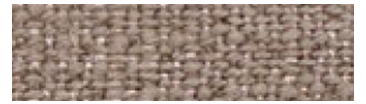
03



05



02



04



31



46



150



16



06



07

Composition: VI 34% , CO 31%, LI 15%,
PC 13%, PL 7%
Abrasion: app. 25.000 Martindale

Cleaning and care:



Vello fabric



01



03



05



07



29



28



2002



26



14



70



2007



58



1041

Composition: 100% Cotton
Abrasion: app. 70.000 Martindale

Cleaning and care:



FINISHES

Elmosoft IX (Elmo) semi-aniline leather



FINISHES

Neocoast (Elmo) pigmented & printed leather



99076



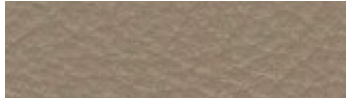
91097



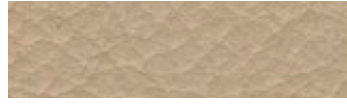
91100



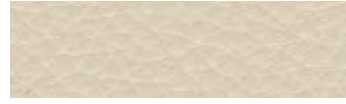
71010



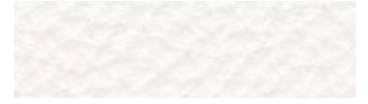
18008



12097



02061



00114



93090



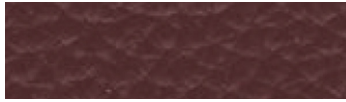
98016



43041



43084



95042



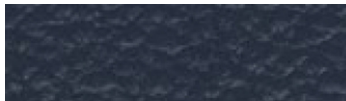
55058



45024



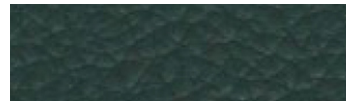
44015



77022



77035



98043



88017

FINISHES

Valencia (Spradling) synthetic leather



Composition: Topcoat 100% vinyl,
backing 100% polyester Hi-Loft
Abrasion: app. 300.000 Martindale
Cleaning and care:



Shades of colour cannot be reproduced exactly on printed paper. MD House Srl is entitled to make modifications at any time and without prior notice.

Nella stampa su carta la tonalità dei colori non può essere riprodotta fedelmente. MD House Srl si riserva la facoltà di apportare modifiche in qualsiasi momento e senza preavviso.