



Mia

The soft, wraparound shape of the Mia armchair pampers the body and relaxes the mind like a warm embrace. Upholstery in fabric, leather or eco-leather.

La poltrona Mia accoglie il corpo e rilassa la mente, con le sue forme avvolgenti e morbide come un abbraccio. Rivestimento in tessuto, pelle o ecopelle.

FINISHES

Moss fabric (Sahco)



0001



0002



0003



0004



0005



0006



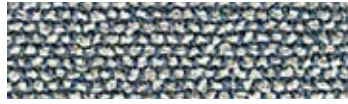
0007



0008



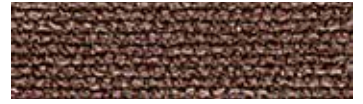
0009



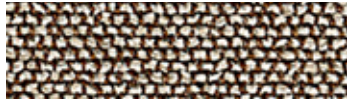
0010



0011



0012



0013



0014



0015



0016



0017



0018



0019



0020



0021



0022

Design: Vincent Van Duysen
 Composition: 52% Cotton,
 22% Viscose, 14% Acrylic,
 6% Linen, 3% Polyester, 3% Nylon
 Weight: 920 g/lin.m
 Durability: 50.000 Martindale

Pilling: 4-5
 Lightfastness: 6-7
 Cleaning and care:

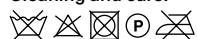


FINISHES

Divina Melange 3 fabric (Kvadrat)

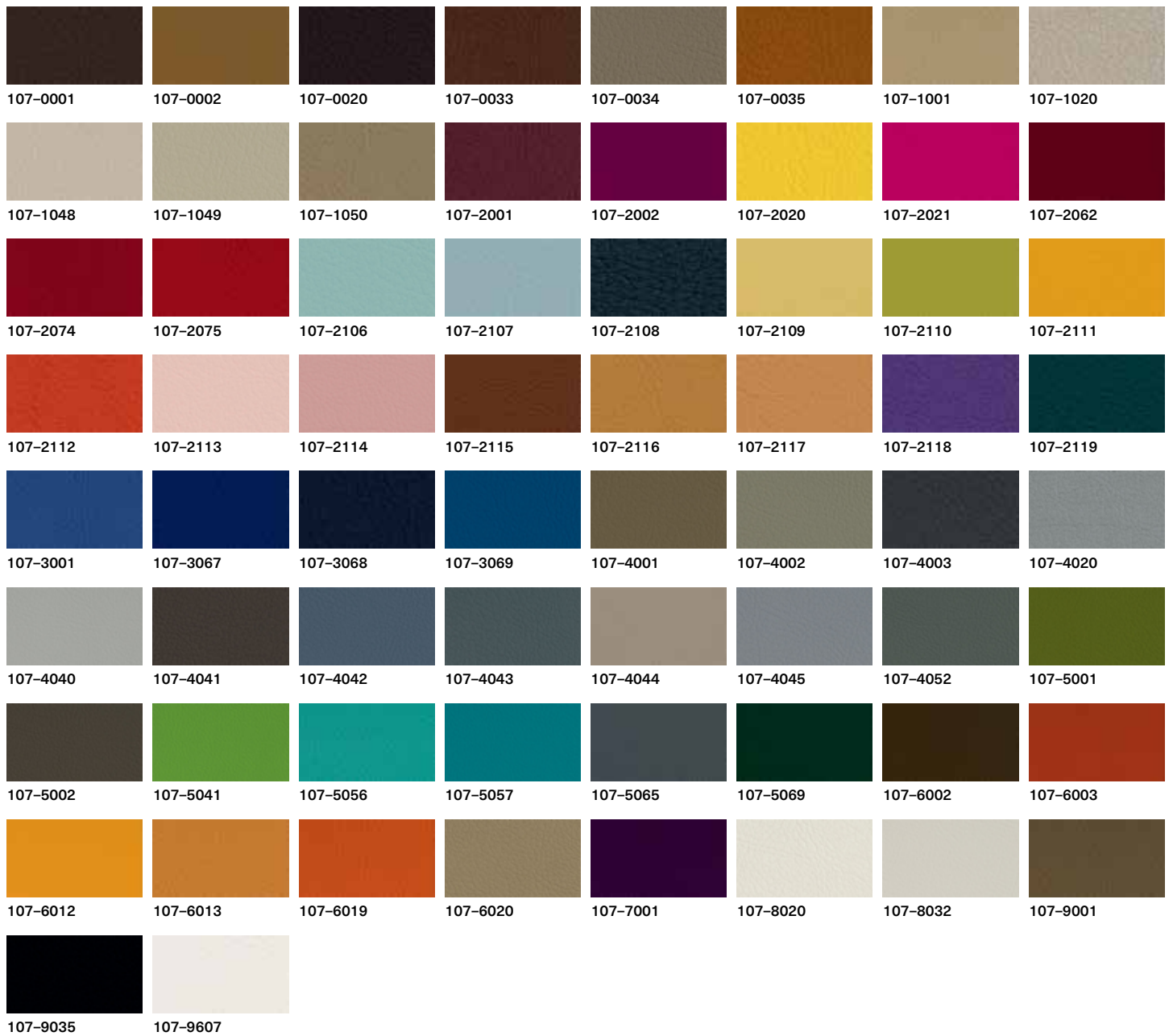


Design: Finn Sködt
 Composition: 100% new wool
 Abrasion: app. 45.000 Martindale
 Cleaning and care:



FINISHES

Valencia synthetic leather (Spradling)



Composition: Topcoat 100% vinyl,
backing 100% polyester Hi-Loft
Abrasion: app. 300.000 Martindale
Cleaning and care:



FINISHES

Neocoast leather (Elmo)



99076



91097



91100



71010



18008



12097



02061



00114



93090



98016



43041



43084



95042



55058



45024



44015



77022



77035



98043



88017

FINISHES

Narvik



111



400



401



402



403



600



602



601



405



200



706



801



511

Composition: 100% Polyester
Weight: 320 gr/mq – 9.4 oz/sqy
Abrasion: 30.000 rubs
Lightfastness: >4
Pilling: 4

Rubbing: dry 4–5, wet 4
Water repellent, stain removable
Cleaning and care:



Bruges



100



400



401



605



600



402



403



405



602



707



303



700



604

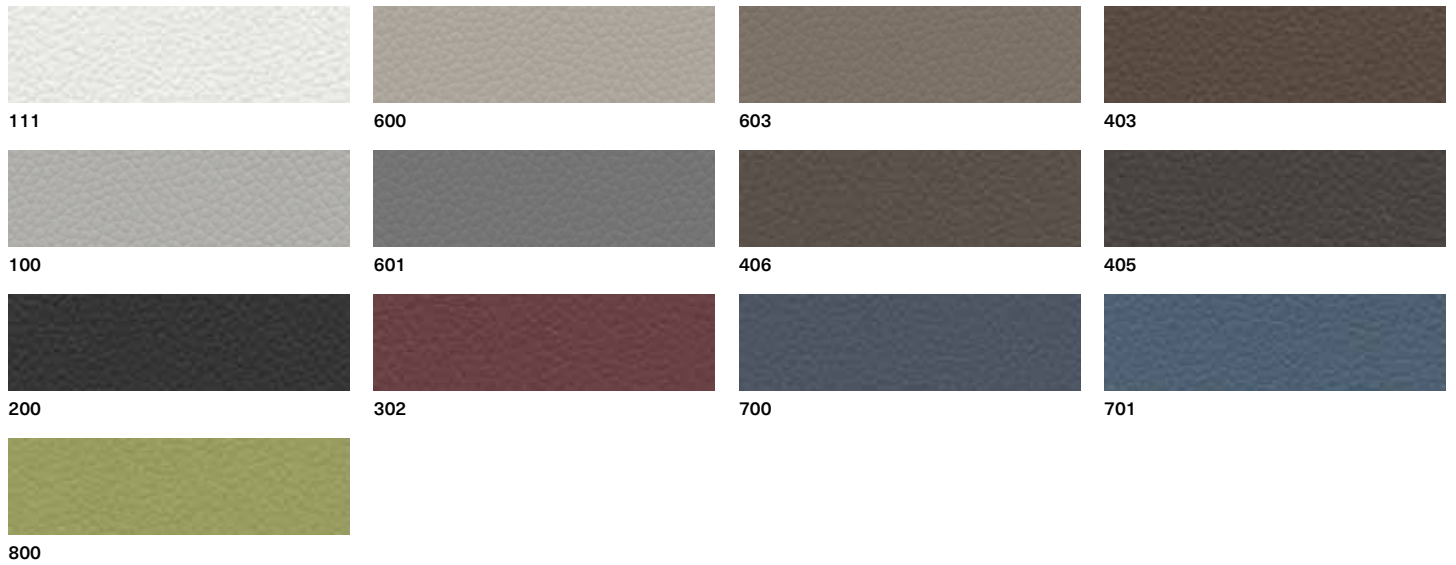
Composition: 100% Polyester
Weight: 330 gr/mq – 9.7 oz/sqy
Abrasion: 30.000 rubs
Lightfastness: 3–4
Pilling: 4–5

Rubbing: dry 4–5, wet 4–5
Water repellent
Cleaning and care:



FINISHES

Bilbao



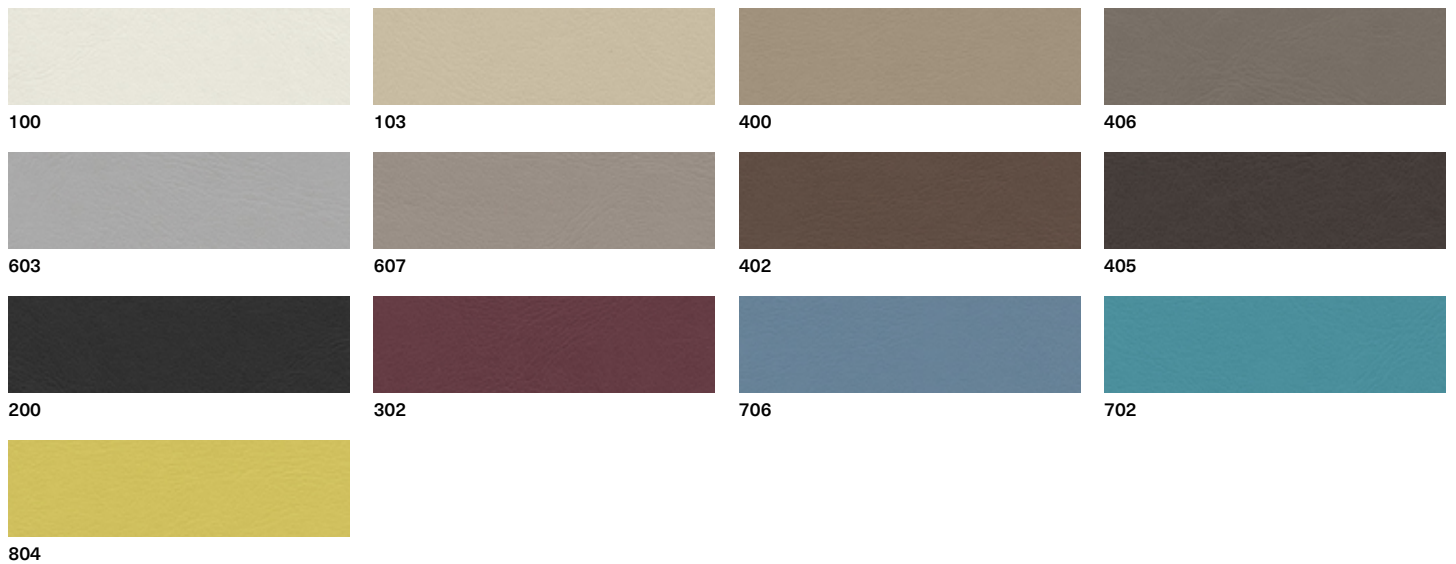
Composition: 90% PVC, 10% Polyester
 Weight: 490 gr/mq – 14.4 oz/sqy
 Abrasion: 50.000 rubs
 Rubbing: dry 5, wet 5

Fire retardant: EN 1021 1/2
 BS 5852 IS 0 cigarette
 BS 5852 IS 1 match
 California TB 117: 2013

Cleaning and care:



Glasgow



Composition: 88% PVC, 7% Polyester
 Weight: 715 gr/mq – 21 oz/sqy
 Abrasion: ≥200.000 rubs
 Lightfastness: ≥7
 Rubbing: dry ≥5, wet ≥5

Fire retardant:
 UNI 9175 Class 11M
 EN 1021-1/2 2006
 BS 5852 IS 0/1
 California TB 117: 2013

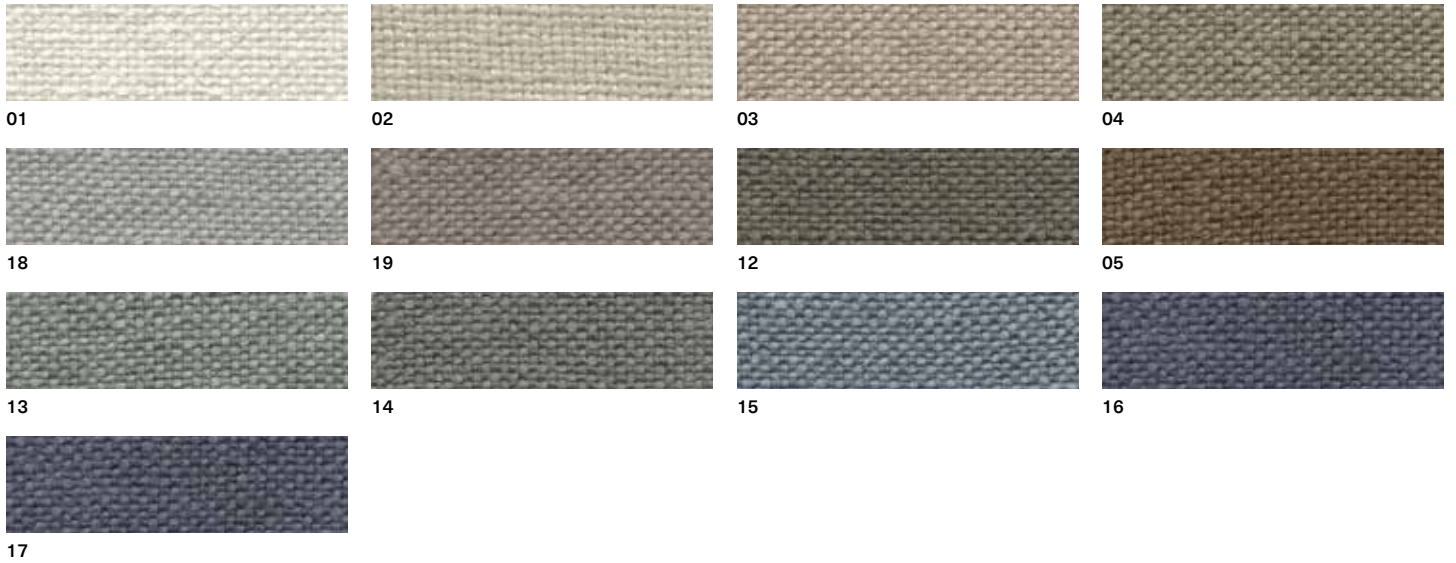
FTP Code 307(88)
 ex. IMO res. A 652 (16)
 NF P 503 Class M1
 DIN 4102 - 1 Class B1
 BS 5852 IS CRIB 5

Cleaning and care:



FINISHES

Cardiff

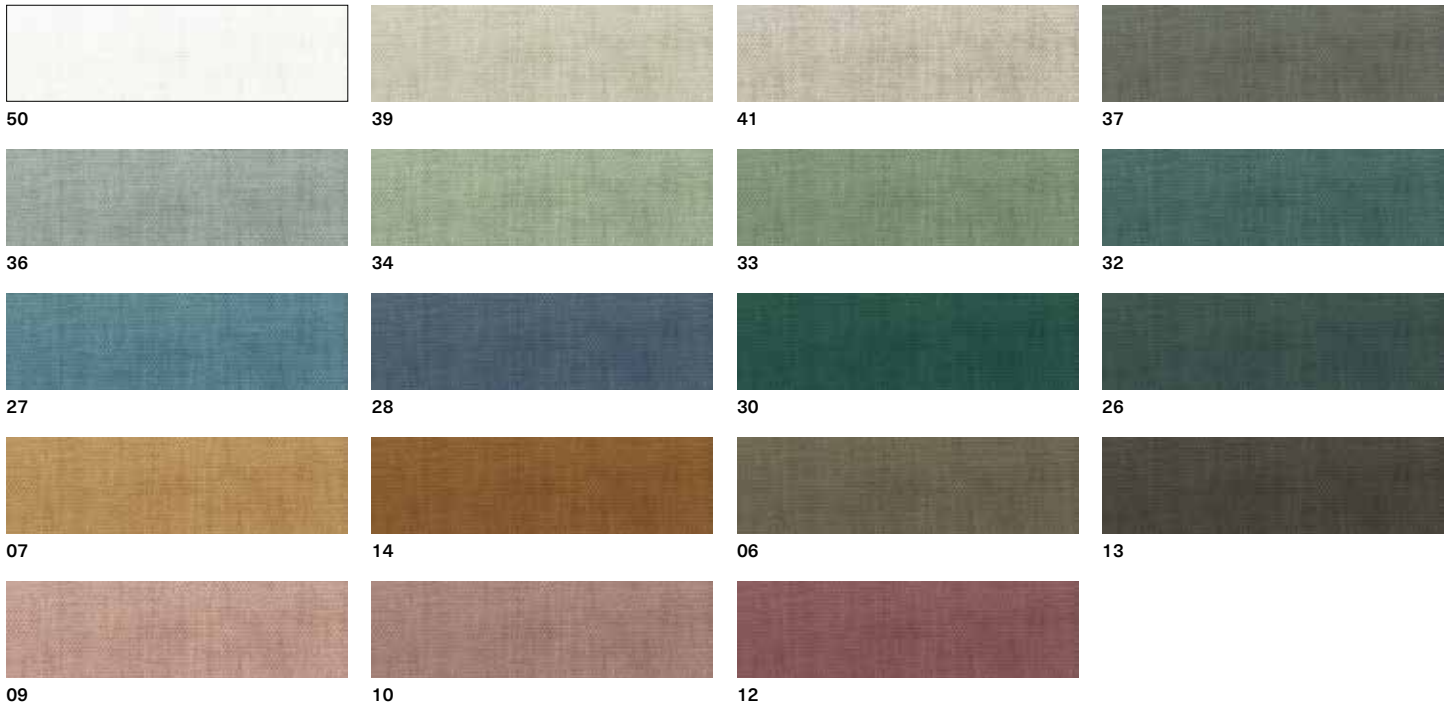


Composition: 54% jute, 46% Linen
 Weight: 670 gr/ml – 14 oz/sqy
 Abrasion: app. 22.000 rubs
 Lightfastness: 3–4
 Pilling: 3

Rubbing: dry >4 wet >3–4
 Cleaning and care:



Parigi



Composition: 100% Linen
 Weight: 680 gr/ml – 14.3 oz/sqy
 Abrasion: app. 30.000 rubs
 Lightfastness: 6
 Pilling: 3–4

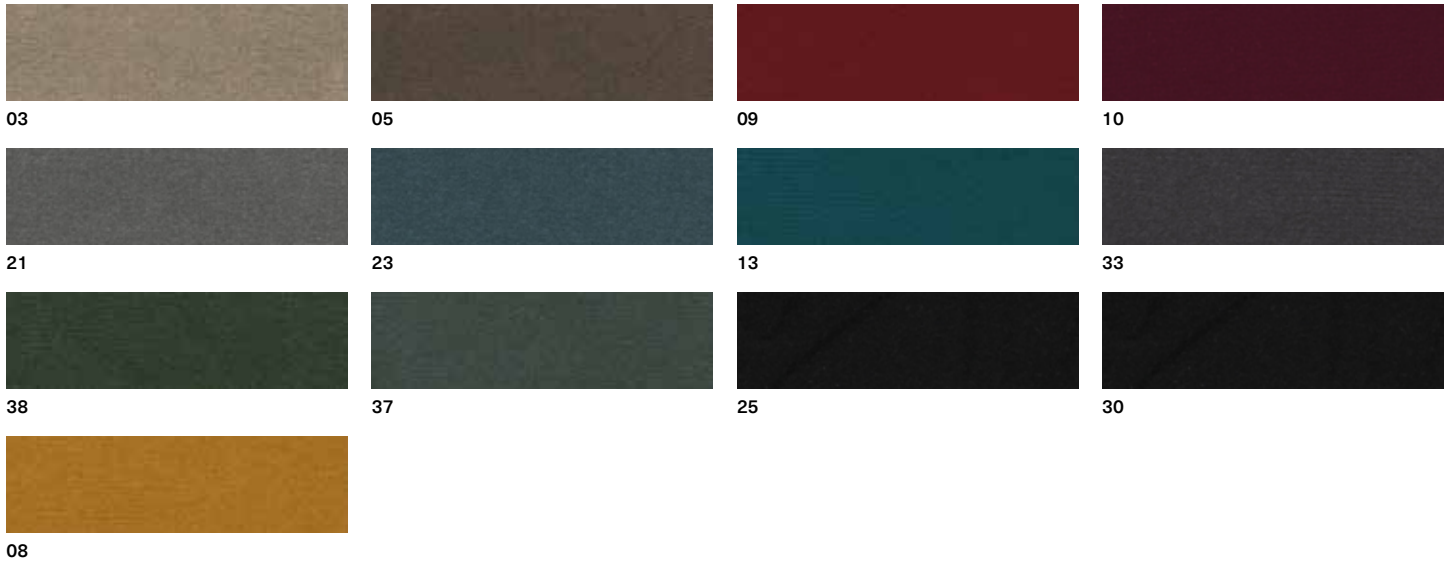
Rubbing: dry >4/5 wet >3
 Fire resistance:
 BS 5852: 1979 part 0/1
 cigarette test: pass
 match test: none

Cleaning and care:



FINISHES

Londra



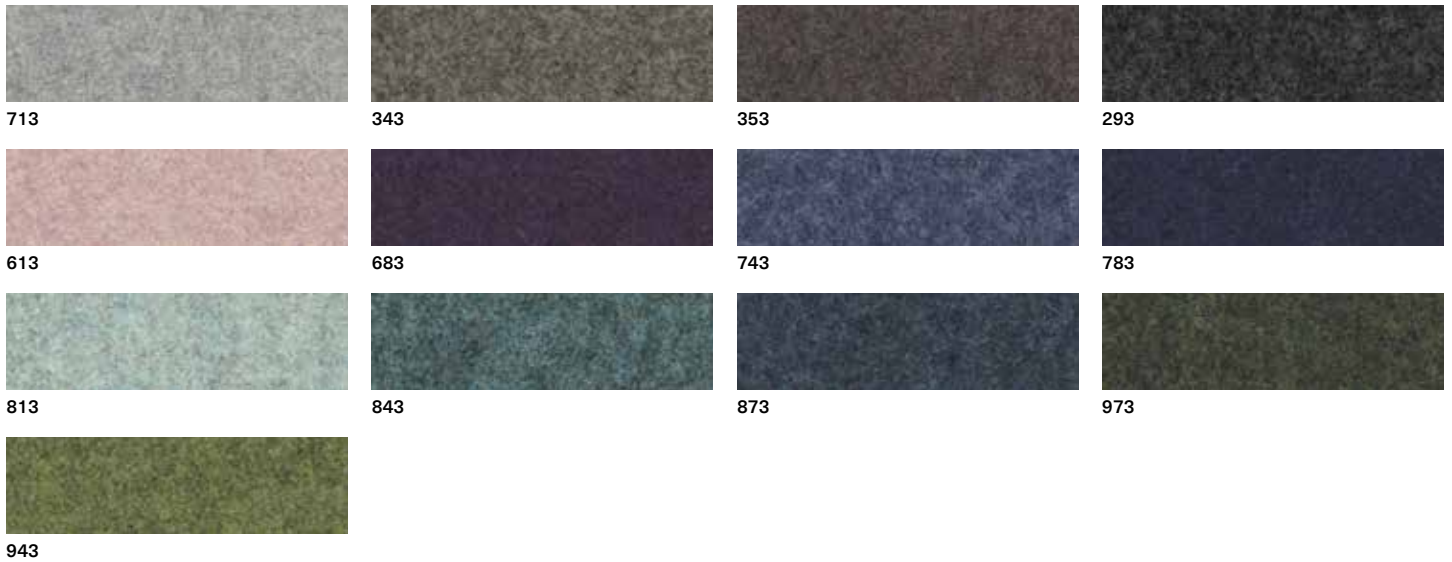
Composition: 100% Cotton
 Weight: 620 gr/ml – 13 oz/sqy
 Abrasion: 65.000 rubs
 Lightfastness: 6
 Pilling: 5

Rubbing: dry >5 wet >4/4
 Fire resistance:
 BS 5852: 1979 part 0/1
 cigarette test: pass
 match test: none

Cleaning and care:



Divina MD



Composition: 100% New Wool
 Weight: 820 gr/mq - 17.2 oz/sqy
 Abrasion: 45.000 rubs
 Lightfastness: 5-7
 Pilling: 3

Fire resistance:
 AS/NZS 1530.3
 BS 5852 Crib 5 - part 1
 DIN 4102 B2
 EN 1021-1/2

IMO FTP Code 2010:Part 8
 NF D 60 013
 NFPA 260
 Onorm B1/Q1
 SN 198 898 5.3

UNI 9175 11M
 US Cal. Bull. 117-2013
 Cleaning and care:



FINISHES

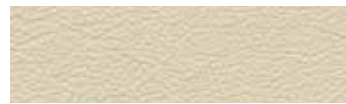
Belfast



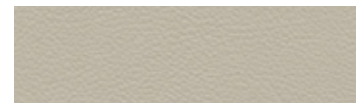
617



661



695



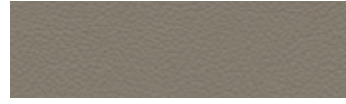
699



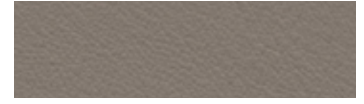
679



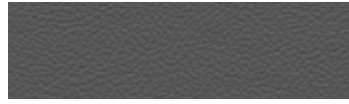
634



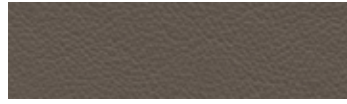
627



638



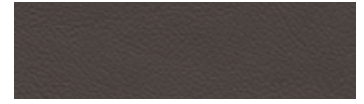
662



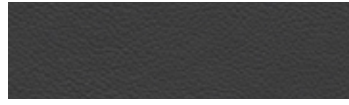
606



639



602



641



624



668



608



672

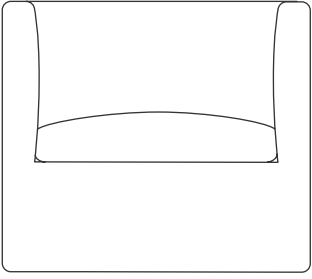
Composition: 100% Leather
Raw material: European bovine
Tannage: Chrome
Lightfastness: ≥4
Rubbing: dry ≥1.000, wet ≥50

Fire resistance: no ignition
ISO 1021/1 - 2
BS5852 part 1 source 0/1
IMO FTP8 Res. A652
California TB 117

UNI 9175 11M
US Cal. Bull. 117-2013
Cleaning and care: dust with
a soft and dry cloth, avoid cleaning
with aggressive products

Shades of colour cannot be
reproduced exactly on printed paper.
MD House Srl is entitled to make
modifications at any time and without
prior notice.

Dimensions



L 72 H 64 P 72
W 28³/₈ H 25²/₈ D 28³/₈