



Novel Island

Novel Island is an island drawer unit designed to complement the wardrobe area. Perfectly finished on all four sides, it can be used in the centre of a walk-in wardrobe or wardrobe space. Transparent tops, accessory trays and tidy trays are the elements that make it precious, like the combination of sophisticated materials and surfaces. Minimal suspension from the floor, handles flush with projecting side panels, reduced thicknesses and transparent effects make its lines delicate, transforming the drawer unit into a minimalist and contemporary element that not only reveals but also keeps things tidy.

DESIGN ruga.perissinotto

Novel Island è una cassettera a isola progettata per completare l'area guardaroba. Perfettamente rifinita sui quattro lati, si usa al centro della cabina armadio o dello spazio dedicato agli armadi. Top trasparenti, vassoi portaoggetti e svuotatasche sono gli elementi che la rendono preziosa, così come la combinazione di materiali e superfici sofisticate. La minima sospensione da terra, le maniglie a filo della sporgenza dei fianchi, gli spessori ridotti e i giochi di trasparenze rendono le sue linee delicate, trasformando la cassettera in un elemento dallo stile minimale e contemporaneo che mostra e contiene allo stesso tempo.

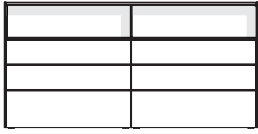
ruga.perissinotto & Sciuto Architetti



The ruga.perissinotto studio was established after a meeting between Alessandro Ruga and Carlotta Perissinotto in London in 2010. Inspired by a versatile approach to design issues, they collaborate with various companies in the furniture district.

Lo studio ruga.perissinotto nasce dall'incontro tra Alessandro Ruga e Carlotta Perissinotto, avvenuto a Londra nel 2010. Animato da un approccio trasversale alle tematiche progettuali, collabora con diverse aziende del distretto del mobile.

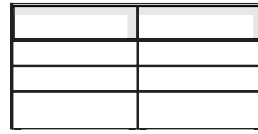
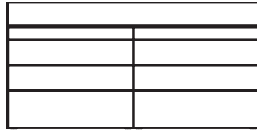
Dimensions



L 152 P 109 H 96 cm
W 59^{7/8}" D 42^{7/8}" H 37^{6/8}"

L 172 P 109 H 96 cm
W 67^{6/8}" D 42^{7/8}" H 37^{6/8}"

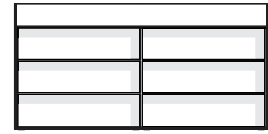
L 192 P 109 H 96 cm
W 75^{5/8}" D 42^{7/8}" H 37^{6/8}"



L 152 P 96,5 H 96 cm
W 59^{7/8}" D 38" H 37^{6/8}"

L 172 P 96,5 H 96 cm
W 67^{6/8}" D 38" H 37^{6/8}"

L 192 P 96,5 H 96 cm
W 75^{5/8}" D 38" H 37^{6/8}"



FINISHES

Melamine-faced



Materico Eucalipto



Materico Noce



Materico Graywood

Tempered glass

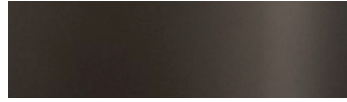


Fumé

Anodized metal

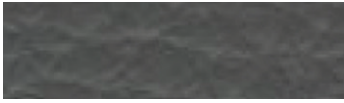


Nero



Bronzo

Synthetic leather (accessories)



Colore Visone