



Valet

Like an assistant that monitors our rest and simplifies our lives, Valet is a versatile object as well as a chair, armchair, pouf, valet stand and clothes hanger. It features soft and curved, yet sleek lines; with small dimensions. The refined aesthetics are inspired by a taut softness that accommodates and supports in an understated and elegant manner. The high backrest, on the one hand, can be used as a valet stand, whereas the single armrest, on the other, provides excellent support for the lower back and neck, allowing your head to rest comfortably. Its dark, recessed feet enhance its visual lightness, making Valet seem almost suspended above the floor.

DESIGN Alberto Lievore

Come un assistente che sorveglia il nostro riposo e semplifica la nostra vita, Valet è un oggetto trasversale, al contempo sedia, poltroncina, pouf, servomuto e appendino. Le linee sono morbide e curve, eppure slanciate; le dimensioni ridotte. L'estetica ricercata è ispirata a una tesa morbidezza che accoglie e sostiene in modo discreto ed elegante. Lo schienale alto da un lato funge da servomuto, così come il bracciolo singolo, dall'altro offre un ottimo supporto lombare e cervicale consentendo di poggiare comodamente il capo. I piedini, scuri e rientranti, ne sottolineano la leggerezza visiva, facendo sembrare Valet quasi sospesa da terra.

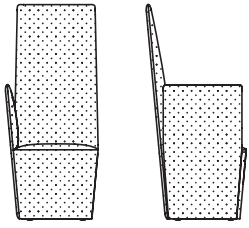
Alberto Lievore



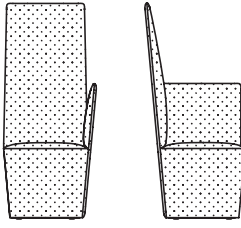
Alberto Lievore graduated as an architect from the University of Buenos Aires. He moved to Barcelona in 1976, where he developed his design activities, turning to a wide array of sectors. Alberto Lievore's works in the furniture sector are those which he is most famous for, both in Europe and in America and Asia. Over the years, his design activities have been acknowledged and rewarded with prestigious national and international awards. His partnership with Italian companies is especially thriving, and it includes both strategic consulting as well as brand and product communication. He holds courses and workshops in universities, first and foremost in Barcelona. His approach focuses on resizing the subjectiveness of the designer in observing reality, in order to develop a more penetrating and solid critical spirit.

Alberto Lievore è laureato in architettura presso l'Università di Buenos Aires. Si è trasferito a Barcellona nel 1976, dove ha sviluppato la sua attività di design, rivolgendosi a una vasta gamma di settori. Le opere di Alberto Lievore nel settore del mobile sono quelle per cui è più famoso, sia in Europa che in America e Asia. Nel corso degli anni la sua attività progettuale è stata riconosciuta e premiata con prestigiosi riconoscimenti nazionali e internazionali. La sua partnership con le aziende italiane è particolarmente fiorente e comprende sia la consulenza strategica che la comunicazione del marchio e del prodotto. Tiene corsi e workshop nelle università, in primis a Barcellona. Il suo approccio si concentra sul ridimensionamento della soggettività del designer nell'osservare la realtà, al fine di sviluppare uno spirito critico solido.

Dimensions



Lh
L 55 P 61 H 120 cm
W 21^{5/8}" D 24" H 47^{2/8}"



Rh
L 55 P 61 H 120 cm
W 21^{5/8}" D 24" H 47^{2/8}"

FINISHES

Alveo fabric



111



130



200



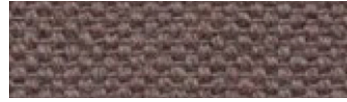
430



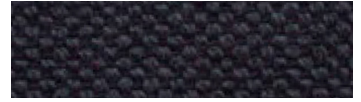
600



602



603



632



705



802



901



902

Composition: 100% recycled cotton
Abrasion: app. 25.000 Martindale
Cleaning and care:



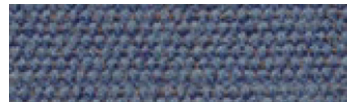
Biacco fabric



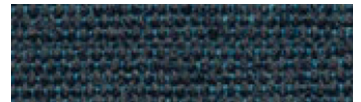
53



14



06



13



11



15

Composition: 75% recycled CO, 25% PL
Abrasion: app. 40.000 Martindale
Cleaning and care:



Borgo fabric



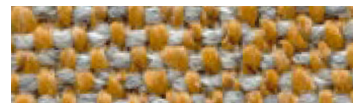
15



17



37



92



98



93



25



76



137

Composition: PC 51% , LI 11%, PL 11%,
VI 11%, CO 16%
Abrasion: app. 25.000 Martindale
Cleaning and care:



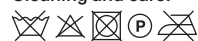
FINISHES

Canvas 2 (Kvadrat) fabric



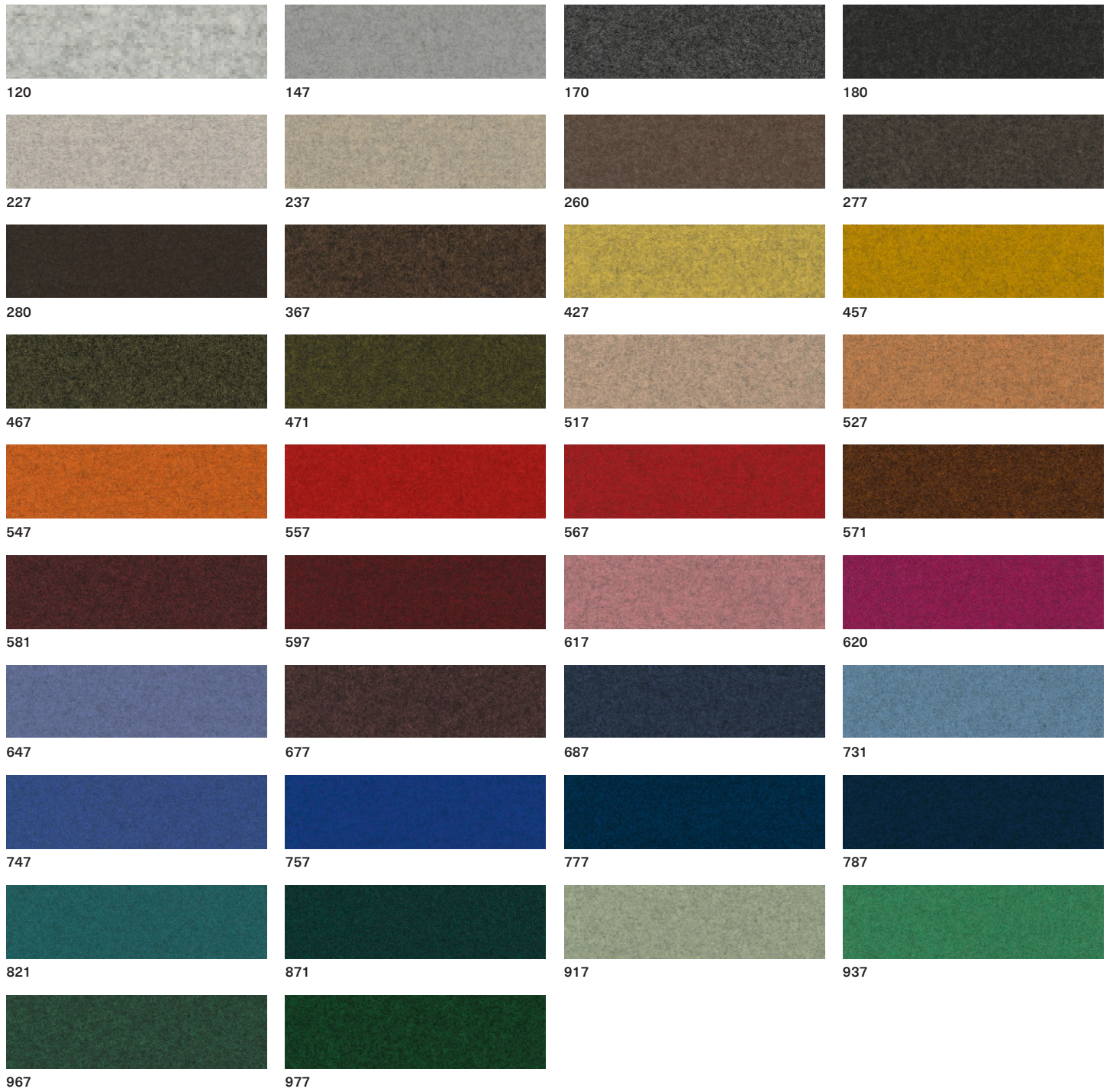
Design: Giulio Ridolfo
Composition: 90% new wool,
worsted, 10% nylon

Abrasion: app. 100.000 Martindale
Cleaning and care:



FINISHES

Divina Melange 3 (Kvadrat) fabric



Design: Finn Sködt
 Composition: 100% new wool
 Abrasion: app. 45.000 Martindale
 Cleaning and care:



FINISHES

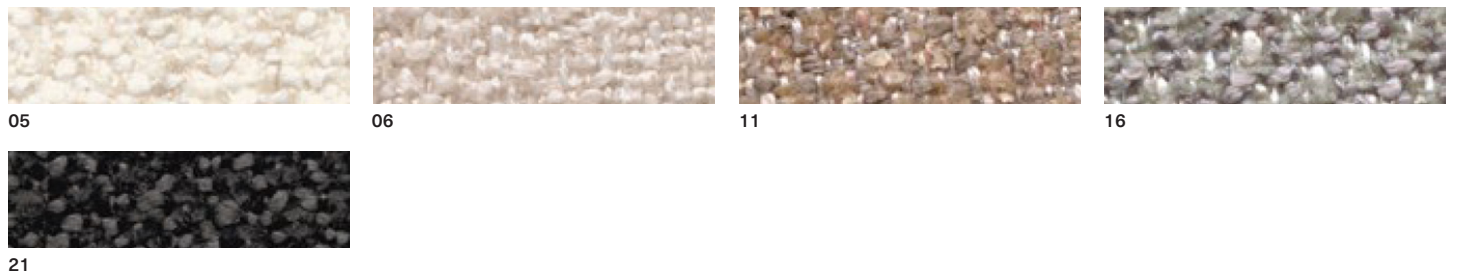
Field 2 (Kvadrat) fabric



Design: Alfredo Häberli
 Composition: 100% Trevira CS
 Abrasion: app. 100.000 Martindale

Cleaning and care:

Greto fabric




Composition: PL 33% , PC 25%,
 VI 23%, CO 10%, LI 9%
 Abrasion: app. 50.000 Martindale

Cleaning and care:

FINISHES

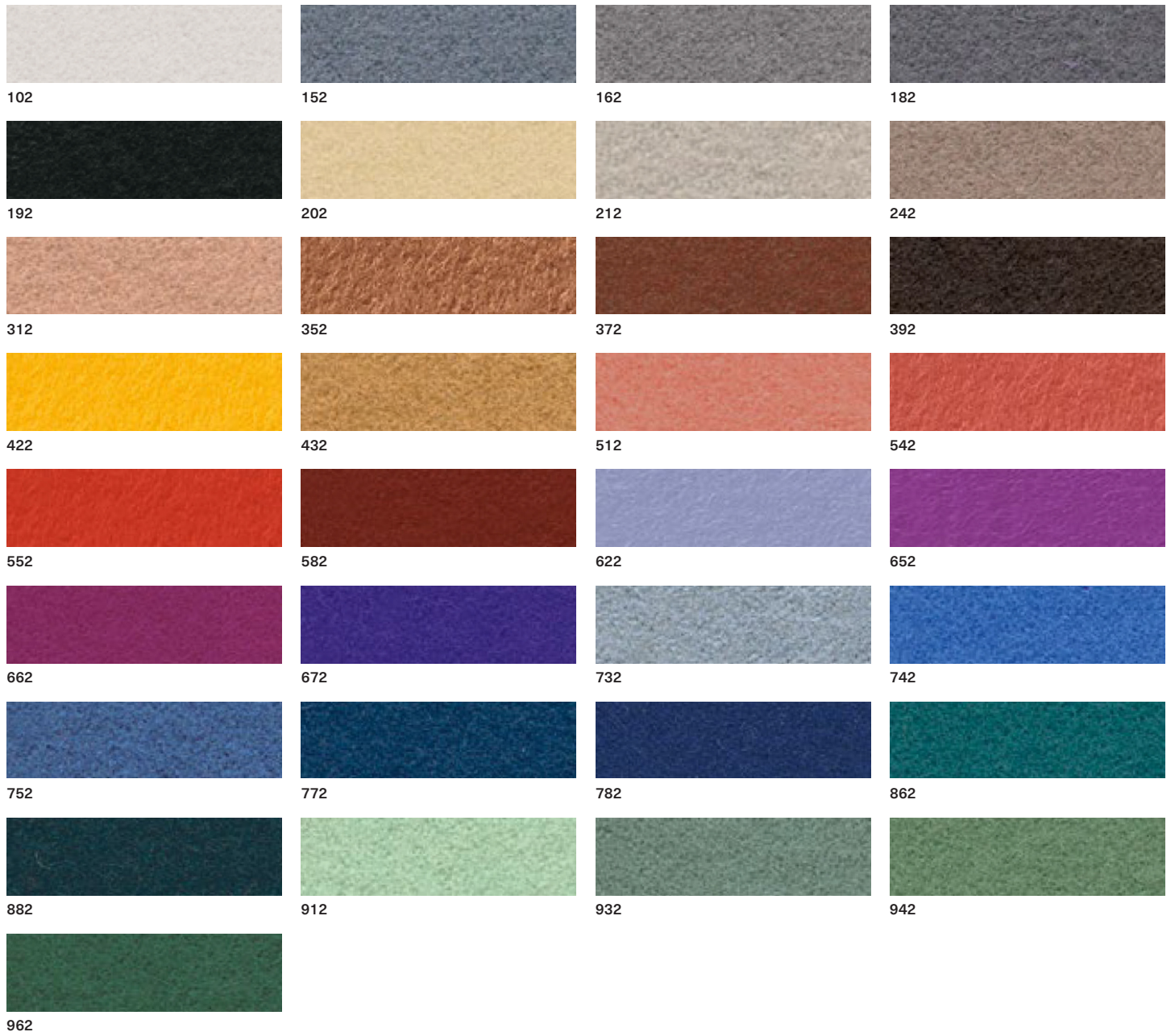
Hallingdal 65 (Kvadrat) fabric



Design: Nanna Ditzel
 Composition: 70% new wool,
 30% viscose
 Abrasion: app. 100.000 Martindale
 Cleaning and care:


FINISHES

Hero 2 (Kvadrat) fabric



Composition: 96% new wool, 4% nylon
 Abrasion: app. 45.000 Martindale
 Cleaning and care:



Merit (Maharam) fabric



Composition: 76% post-consumer recycled polyester, 24% polyester
 Abrasion: app. 85.000 Martindale
 Cleaning and care:



FINISHES

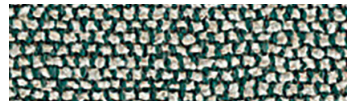
Moss (Sahco) fabric



0001



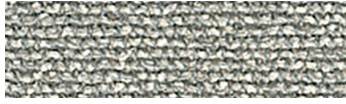
0002



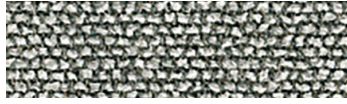
0003



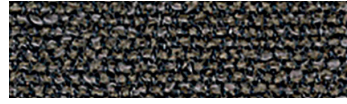
0004



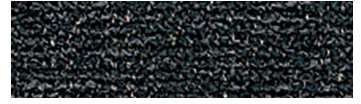
0005



0006



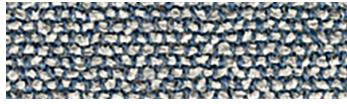
0007



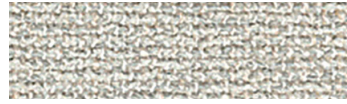
0008



0009



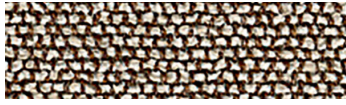
0010



0011



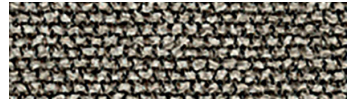
0012



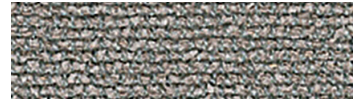
0013



0014



0015



0016



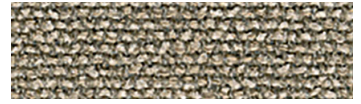
0017



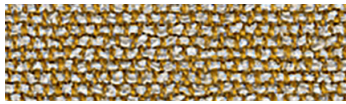
0018



0019



0020



0021



0022

Design: Vincent Van Duysen
Composition: 52% Cotton,
22% Viscose, 14% Acrylic,
6% Linen, 3% Polyester, 3% Nylon
Weight: 920 g/lin.m
Durability: 50.000 Martindale

Pilling: 4-5
Lightfastness: 6-7
Cleaning and care:
⊗ ⊗ ⊗ ⊗ ⊗

Orsetto (ONE Mario Sirtori) fabric



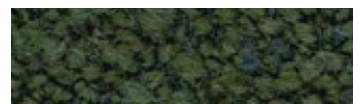
01/2



98/21



02/26



98/18



98/20



98/16

Composition: 34% Viscose, 33%
Acrylic, 17% Wool, 8% Polyester, 4%
Flax, 4% Cotton
Abrasion: app. 80.000 Martindale
Cleaning and care:

⊗ ⊗ ⊗ ⊗ ⊗

FINISHES

Parigi fabric



50



39



41



37



07



06



13



09



10



12



34



33



30



32



26



36



27



28

Composition: 100% linen
Abrasion: app. 30.000 Martindale

Cleaning and care:

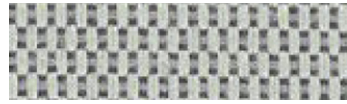
Patio (Kvadrat) fabric



100



110



140



150



170



200



210



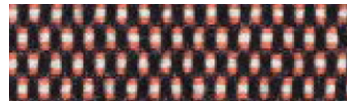
220



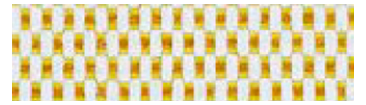
230



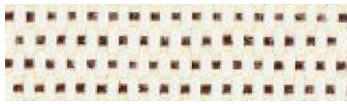
340



370



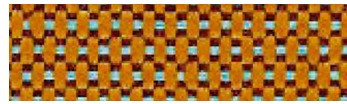
410



430



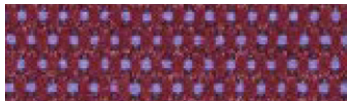
440



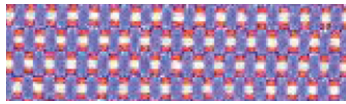
450



550



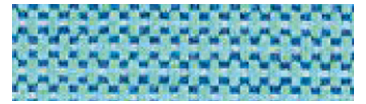
570



650



730



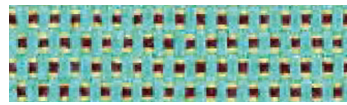
740



750



780



840



970

Design: Karina Nielsen Rios
Composition: 100% Trevira CS,
water repellent finish

Abrasion: app. 50.000 Martindale
Cleaning and care:

FINISHES

Remix 3 (Kvadrat) fabric



Composition: 90% new wool,
worsted, 10% nylon
Abrasion: app. 100.000 Martindale

Cleaning and care:



FINISHES

RePo 3D fabric



BIT 105



BIT 106



BIT 109



BIT 107



BIT 108



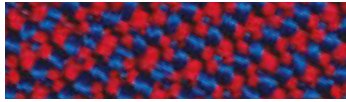
BIT 804



BIT 305



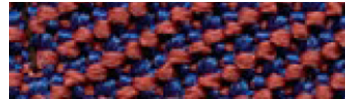
BIT 807



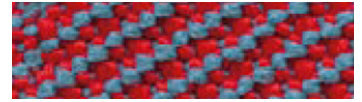
BIT 307



BIT 308



BIT 703



BIT 306



BIT 305



BIT 705



BIT 605



BIT 600

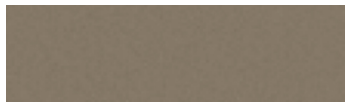
Composition: 98% recycled polyester,
2% LYCRA® elastomer
Abrasion: > 350.000 cicli, ISO 12947-2
Cleaning and care:



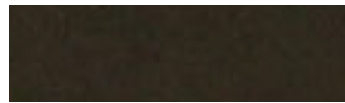
Scuba (Maharam) fabric



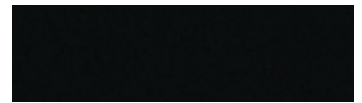
001



005



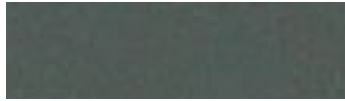
006



007



008



009



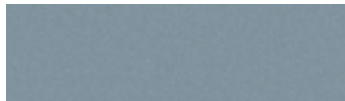
010



012



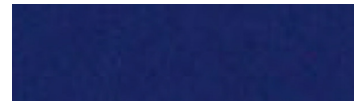
013



015



016



017



020



021



023

Composition: 100% polyurethane
(surface), 100% polyester (backing)
Abrasion: app. 100.000 Martindale
Cleaning and care:



Steelcut Trio 3 (Kvadrat) fabric



Design: Frans Dijkmeijer
and Giulio Ridolfo
Composition: 90% new wool,
worsted, 10% nylon
Abrasion: app. 100.000 Martindale
Cleaning and care:



FINISHES

Stipa fabric



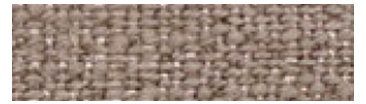
03



05



02



04



31



46



150



16



06

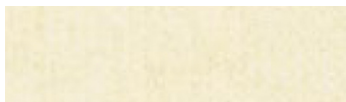


07

Composition: VI 34% , CO 31% , LI 15% ,
PC 13% , PL 7%
Abrasion: app. 25.000 Martindale
Cleaning and care:



Vello fabric



01



03



05



07



29



28



2002



26



14



70



2007



58



1041

Composition: 100% Cotton
Abrasion: app. 70.000 Martindale
Cleaning and care:



FINISHES

Elmosoft IX (Elmo) semi-aniline leather



FINISHES

Neocoast (Elmo) pigmented & printed leather



99076



91097



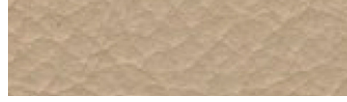
91100



71010



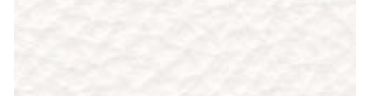
18008



12097



02061



00114



93090



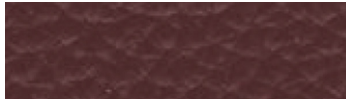
98016



43041



43084



95042



55058



45024



44015



77022



77035



98043



88017

FINISHES

Valencia (Spradling) synthetic leather



Composition: Topcoat 100% vinyl,
backing 100% polyester Hi-Loft
Abrasion: app. 300.000 Martindale
Cleaning and care:



Shades of colour cannot be
reproduced exactly on printed paper.
MD House Srl is entitled to make
modifications at any time and without
prior notice.

Nella stampa su carta la tonalità dei
colori non può essere riprodotta
fedelmente. MD House Srl si riserva
la facoltà di apportare modifiche in
qualsiasi momento e senza preavviso.