

# ASIA DIAMOND

Design CSR Eforma



Asia Diamond è la sedia imbottita nata all'interno del progetto di design CSR Eforma. Un complemento d'arredo affascinante e lineare che per soddisfare esigenze di stile e spazio è possibile richiedere in due altezze, mentre il rivestimento, non sfoderabile, è disponibile in pelle, ecopelle o tessuto. Elegante e prestigiosa, questa sedia imbottita è sostenuta da quattro gambe in metallo verniciato o completamente rivestite e si differenzia dalle altre sedute della linea Asia per l'iconico schienale trapuntato. Un elemento decorativo prezioso e affascinante come la sedia Asia Diamond si abbina perfettamente a tavoli prestigiosi e importanti come il tavolo Rotolo con top in legno. Disponibile anche nella versione classica Asia, Asia Edge. La variante Flex con schienale flessibile la rende ancora più confortevole.

*Asia Diamond is the upholstered chair born within the CSR Eforma design project. A fascinating and linear piece of furniture that can be requested in two heights to meet style and space needs, while the non-removable upholstery is available in leather, eco-leather or fabric. Elegant and prestigious, this upholstered chair is supported by four legs in painted metal or completely covered and differs from the other seats of the Asia line for its iconic quilted backrest. A precious and charming decorative element like the Asia Diamond chair matches perfectly with prestigious and important tables such as the Rotolo table with a wooden top. Also available in the classic Asia, Asia Edge. The Flex variant with flexible backrest makes it even more comfortable.*

**eforma**  
DESIGN ITALIANO

## Informazioni tecniche / Technical informations



**Sedia imbottita con struttura in metallo, ASIA DIAMOND con schienale trapuntato, ASIA EDGE con bordino, ASIA SOFT con cuscino nella seduta e schienale.**

### Cordoncino in ecopelle.

Bianco	1	Beige	11
Antracite	7	Fango	14
Nero	8	Testa di Moro	16

ASIA, ASIA DIAMOND, ASIA EDGE  
 ASIA HIGH, ASIA HIGH DIAMOND, ASIA HIGH EDGE  
 ASIA SOFT  
 ASIA HIGH SOFT

### Rivestimento non sfoderabile.

	H 140 cm x L 120 cm		2,00 m <sup>2</sup>
	H 140 cm x L 120 cm		2,00 m <sup>2</sup>
	H 140 cm x L 120 cm		2,10 m <sup>2</sup>
	H 140 cm x L 120 cm		2,40 m <sup>2</sup>

**Upholstered chair with metal frame, ASIA DIAMOND with a quilted backrest, ASIA EDGE with piping, ASIA SOFT with pillow in the seat and in the backrest.**

### Piping eco-leather.

Bianco	1	Beige	11
Antracite	7	Fango	14
Nero	8	Testa di Moro	16

ASIA, ASIA DIAMOND, ASIA EDGE  
 ASIA HIGH, ASIA HIGH DIAMOND, ASIA HIGH EDGE  
 ASIA SOFT  
 ASIA HIGH SOFT

### Cover not removable.

	H 140 cm x L 120 cm		2,00 m <sup>2</sup>
	H 140 cm x L 120 cm		2,00 m <sup>2</sup>
	H 140 cm x L 120 cm		2,10 m <sup>2</sup>
	H 140 cm x L 120 cm		2,40 m <sup>2</sup>



**Sedia imbottita con struttura in metallo e schienale flessibile, ASIA FLEX DIAMOND con schienale trapuntato, ASIA FLEX EDGE con bordino, ASIA FLEX SOFT con cuscino nella seduta e schienale.**

### Cordoncino in ecopelle.

Bianco	1	Beige	11
Antracite	7	Fango	14
Nero	8	Testa di Moro	16

ASIA FLEX, ASIA FLEX DIAMOND, ASIA FLEX EDGE  
 ASIA FLEX SOFT

### Rivestimento non sfoderabile.

	H 140 cm x L 120 cm		2,00 m <sup>2</sup>
	H 140 cm x L 120 cm		2,10 m <sup>2</sup>

**Upholstered chair with metal frame and flexible backrest, ASIA FLEX DIAMOND with a quilted backrest, ASIA FLEX EDGE with piping, ASIA FLEX SOFT with pillow in the seat and in the backrest.**

### Piping eco-leather.

Bianco	1	Beige	11
Antracite	7	Fango	14
Nero	8	Testa di Moro	16

ASIA FLEX, ASIA FLEX DIAMOND, ASIA FLEX EDGE  
 ASIA FLEX SOFT

### Cover not removable.

	H 140 cm x L 120 cm		2,00 m <sup>2</sup>
	H 140 cm x L 120 cm		2,10 m <sup>2</sup>

# FINITURE/FINISHES

Attenzione: il prodotto finito può presentare delle lievi variazioni di colore rispetto ai campioni forniti dall'azienda. I colori visualizzati sono puramente indicativi e possono variare rispetto alla realtà. Rivolgersi ad EFORMA o al proprio rivenditore di fiducia per ricevere maggiori informazioni. EFORMA si riserva di apportare modifiche e/o migliorie di carattere tecnico ed estetico ai propri modelli e prodotti in qualsiasi momento e senza preavviso. / *Attention: the final product may show slight variations in colour compared to the samples supplied by the company. The colours displayed are indicative and can vary in reality. Please contact EFORMA or your preferred retailer for more information. EFORMA reserves the right to change and/or apply technical and esthetical improvements to its models and products at any time without any notice.*

## Metallo/Metal

I metalli della nostra collezione vengono verniciati a polvere così da rivestire le nostre superfici a scopo decorativo e protettivo. Lo spessore finale della verniciatura a polveri, risulta particolarmente elevata contribuendo ad una serie di rilevanti vantaggi sul prodotto verniciato: resistenza meccanica, resistenza agli agenti corrosivi, scarsa infiammabilità, precisione nell'applicazione. Le verniciature a polveri utilizzate sono totalmente atossiche e prive di solventi, per questo motivo la verniciatura a polveri è una lavorazione ECO-FRIENDLY, a bassissimo impatto ambientale. Disponibile la versione cromata dove il metallo o l'alluminio vengono rivestiti di cromo, conferendogli così durezza, resistenza chimica e resistenza all'ossidazione. / *The metals in our collection are powder coated in order to coat our surfaces for decorative and protective purposes. The final thickness of the powder coating is particularly high contributing to a series of advantages for the painted product: mechanical resistance, resistance to corrosive agents, low flammability, precision in the application. The powder coatings used are non-toxic and solvent-free, for this reason powder coating is an ECO-FRIENDLY process, with a very low environmental impact. The chrome version is available where the metal or aluminum is coated with chrome, giving it hardness, chemical resistance and resistance to oxidation.*



V01 - Nero/Black



V02 - Bianco/White



V03 - Antracite/Anthracite



V04 - Titanio/Titanium



V05 - Bronzo/Bronze



V06 - Oro/Gold



CRO - Cromo/Chrome



CRN - Cromo Nero/  
Black Chrome



ASP - Alluminio Spazzolato/  
Polished Aluminium



## Legno/Wood

Il legno che viene utilizzato è tra i migliori che esistono sul mercato europeo. Viene lavorato con le migliori tecniche garantendo così resistenza e durata. *The wood which is used is one of the best available in European markets. It is worked with the best techniques guaranteeing resistance and durability.*

### LEGNO MASSELLO/SOLID WOOD

Il legno utilizzato è un materiale di pregio che si caratterizza principalmente per la resistenza all'usura e per l'estetica. Durante il suo ciclo di crescita, sviluppo e maturazione, il legno si evolve nelle sue qualità come il cambio nel colore, nei nodi, e nelle vene. Essendo un materiale vivo, e naturale, può presentare delle variazioni di vene e di tonalità. *The wood used is a valuable material that is mainly characterized by its wear resistance and its aesthetics. During its cycle of growth, development and maturation, the wood's qualities. Evolve showing a change in color, in the knots, and in the veins. Being a living, natural material, it can present variations in veins and shades.*



FVC - Frassino tinto Noce Canaletto/  
Canaletto Walnut stained Ash



FNR - Frassino tinto Nero/Black stained Ash

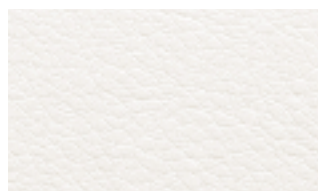


FTM - Frassino tinto Testa di Moro/  
Dark Brown stained Ash

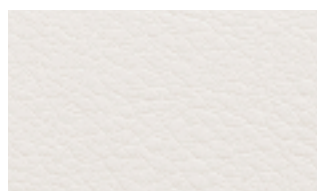


## Finiture imbottiture / Upholstery Finishes

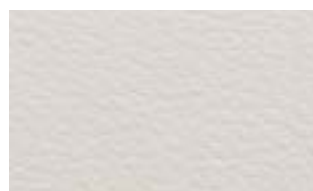
### Rivestimento in ecopelle / Covering in eco-leather



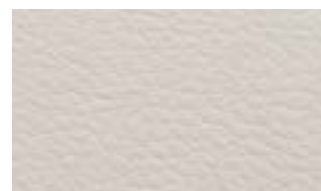
1 Bianco



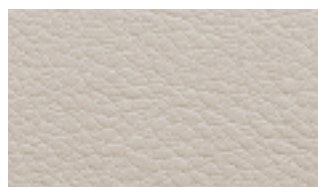
2 Latte



25 Panna



9 Avorio



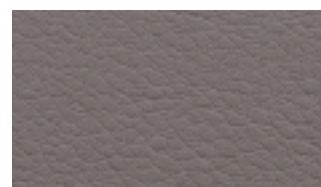
11 Beige



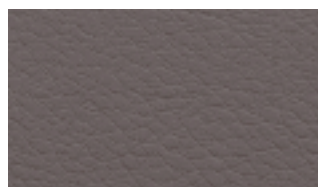
13 Canapa



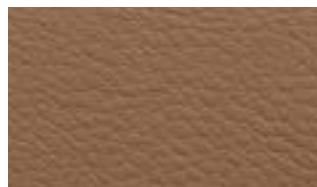
12 Beige scuro



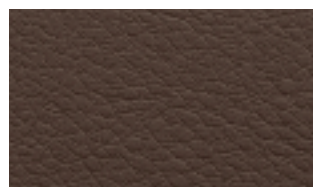
14 Fango



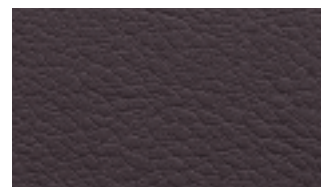
15 Tortora



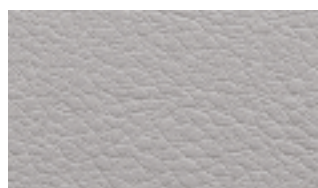
30 Tabacco



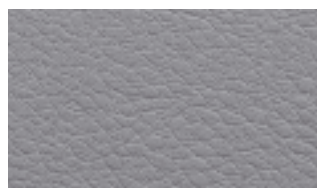
31 Marrone scuro



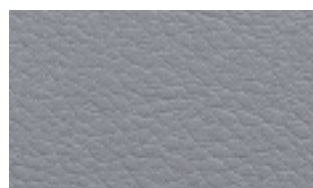
16 Testa di moro



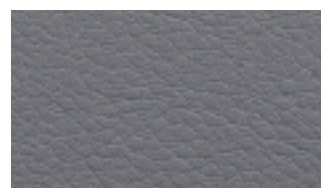
4 Grigio chiaro



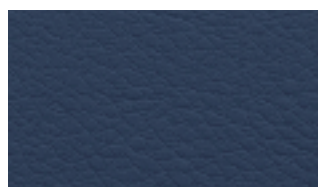
5 Grigio



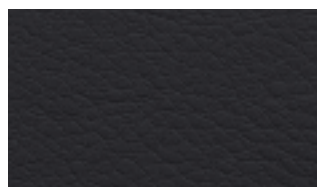
6 Cenere



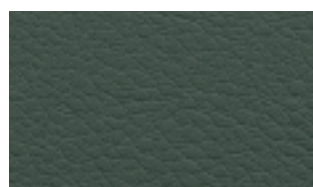
7 Antracite



56 Oceano



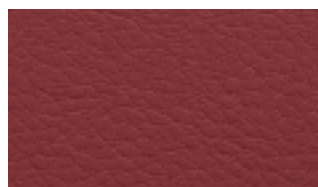
8 Nero



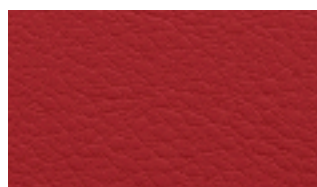
24 Verde scuro



23 Verde salvia

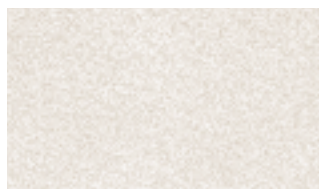


39 Bordeaux



35 Rosso

**Rivestimento in econabuk / Covering in eco-nabuk**



15 Bianco



1 Beige



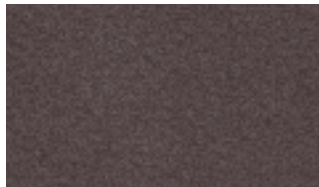
2 Marrone



3 Fango



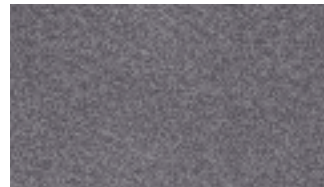
4 Cioccolato



5 Testa di moro



13 Grigio



6 Antracite



17 Blu



16 Bordeaux



11 Viola

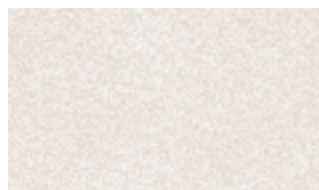


12 Vinaccia



10 Ottanio

**Rivestimento in econabuk / Covering in eco-nabuk**



15 Bianco



1 Beige



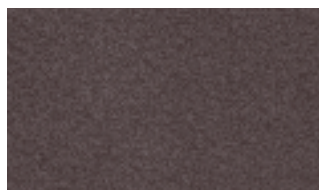
2 Marrone



3 Fango



4 Cioccolato



5 Testa di moro



13 Grigio



6 Antracite





17 Blu



16 Bordeaux



11 Viola



12 Vinaccia



10 Ottanio

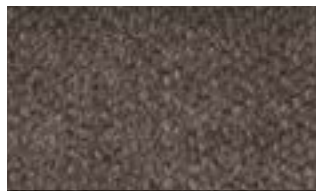
**Rivestimento in tessuto A / Covering fabric A**



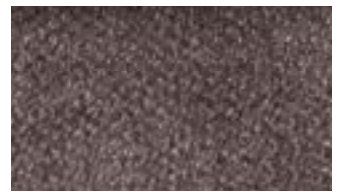
A 100



A 101



A 102



A 103



A 104



A 105



A 106



A 107



A 200



A 202



A 203



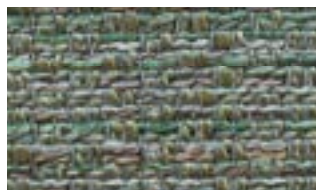
A 204



A 301



A 302

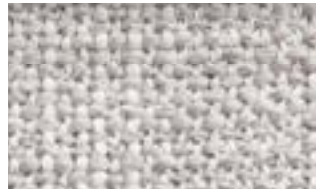


A 303

**Rivestimento in tessuto B / Covering in fabric B**



B 200



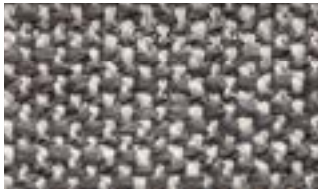
B 201



B 202



B 203



B 204



B 205



B 300



B 301



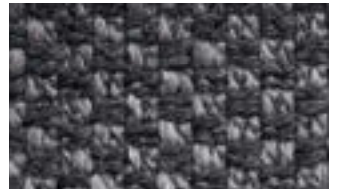
B 302



B 303



B 304



B 305



B 400



B 401



B 402



B 403



B 404



B 405



B 128



B 108



B 139



B 103



B 136

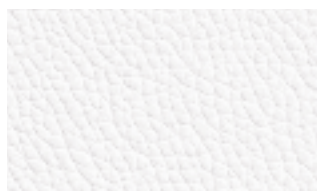


B 123

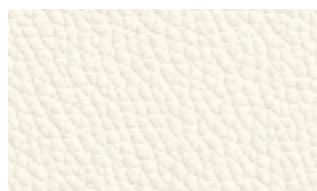




## Rivestimento in pelle / *Covering in leather*



5000 Bianco



5518 Latte



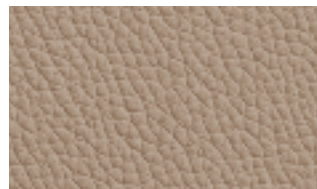
5508 Avorio



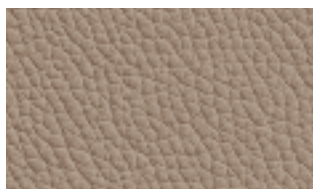
5480 Panna



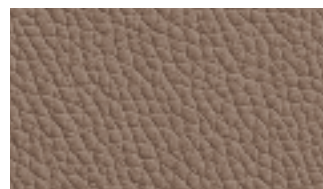
5528 Beige



5320 Beige scuro



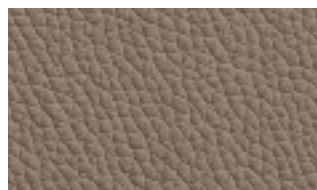
9034 Creta



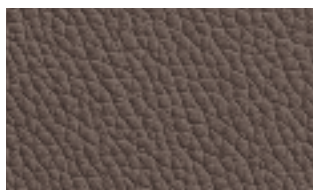
5502 Avana



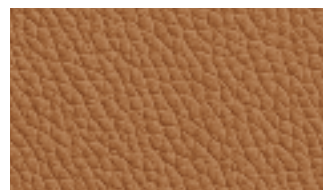
5414 Marrone



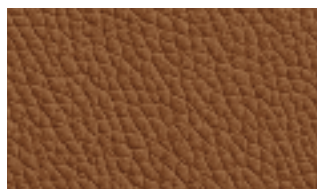
5522 Tortora



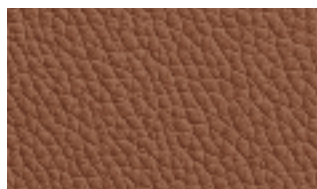
5504 Fango



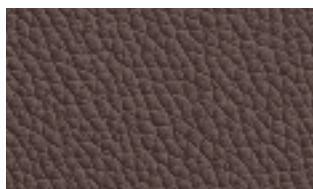
5070 Nocciola



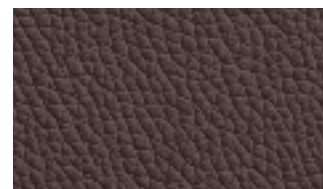
5110 Tabacco



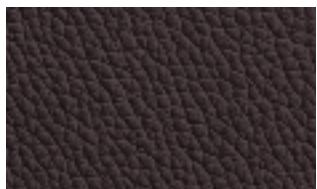
5090 Marrone chiaro



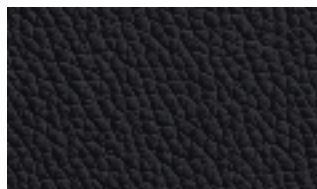
5400 Marrone scuro



9030 Cioccolato



5270 Testa di moro



5300 Nero



5402 Grigio chiaro



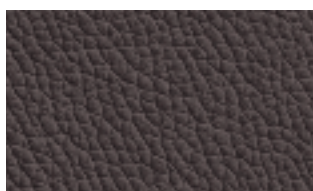
2256 Ghiaccio



5280 Cenere



5290 Grigio medio



5310 Antracite



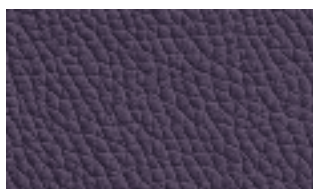
5200 Rosso



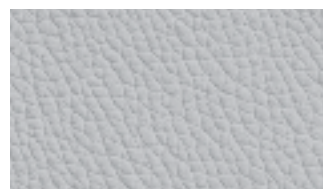
5210 Bordeaux



5460 Mora

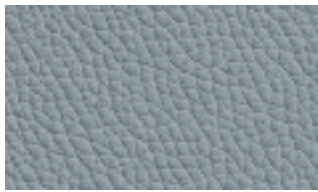


5406 Vinaccia



5420 Grigio





5416 Avio



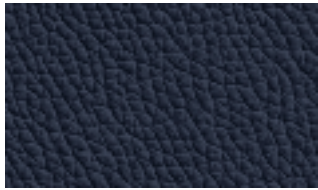
5428 Ottanio



9031 Blu



9021 Oceano



5431 Blu notte



5120 Verde salvia

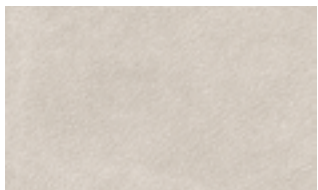


5150 Verde bosco



9045 Muschio

## Rivestimento in pelle nabuk / *Covering in nabuk leather*



100 Sabbia



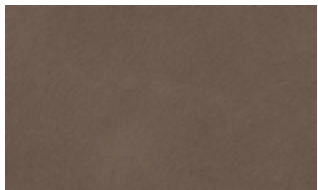
101 Conchiglia



102 Seppia



103 Terra



110 Marrone



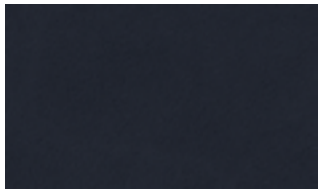
105 Marrone scuro



104 Salvia



106 Orione



107 Oceano



108 Grigio



109 Antracite

## Finiture dettagli / *Detail finishes*

### Cordino in ecopelle e Zip / *Piping eco-leather and Zip*



1 Bianco



7 Antracite



8 Nero



11 Beige



14 Fango



16 Testa di Moro