

BEA DIAMOND

Design Antoy Filips



Bea Diamond è la sedia minimale che ben si colloca in un contesto contemporaneo, impreziosita da dettagli unici e di pregio. Ideata dal designer Antoy Filips, questa sedia minimale imbottita è infatti resa unica e iconica dallo schienale trapuntato. Il tocco di personalizzazione è possibile scegliendo il tipo di rivestimento non sfoderabile disponibile in pelle, ecopelle o tessuto e i dettagli delle gambe in metallo che possono essere verniciate o completamente rivestite. Linee leggere e slanciate definiscono questo complemento d'arredo minimal ed essenziale che si inserisce in modo versatile sia in contesti domestici che professionali. Raffinata ed elegante, la sedia Bea Diamond si adatta a contesti strutturati accanto ad altri complementi d'arredo importanti come il tavolo Cilindro con top in ceramica e la madia Alma Diamond che richiama la stessa trama dello schienale trapuntato, creando coerenza e continuità nell'ambiente. Disponibile anche nella versione classica Bea.

Bea Diamond is a minimal chair that fits well in contemporary settings, embellished with unique and high-quality details. Designed by Antoy Filips, this minimal upholstered chair is made unique and iconic by the quilted backrest. Personalization is possible by choosing the type of non-removable covering available in leather, faux leather, or fabric, and the metal leg details that can be painted or completely covered. Sleek and slender lines define this minimal and essential furnishing accessory that fits versatilely in both domestic and professional environments. Refined and elegant, the Bea Diamond chair adapts to structured environments alongside other important furnishings such as the Cilindro table with a ceramic top and the Alma Diamond sideboard that recalls the same quilted backrest pattern, creating coherence and continuity in the environment. Also available in the classic Bea version.

eforma
DESIGN ITALIANO

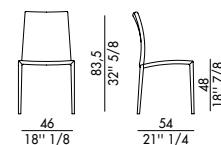
Informazioni tecniche / Technical informations



BEA





BEA DIAMOND





Sedia imbottita con struttura in metallo, BEA DIAMOND con schienale trapuntato.

Rivestimento non sfoderabile.

 H 140 cm x L 120 cm  1,80 m²

Upholstered chair with metal frame, BEA DIAMOND with a quilted backrest.

Cover not removable.

 H 140 cm x L 120 cm  1,80 m²

FINITURE/FINISHES

Attenzione: il prodotto finito può presentare delle lievi variazioni di colore rispetto ai campioni forniti dall'azienda. I colori visualizzati sono puramente indicativi e possono variare rispetto alla realtà. Rivolgersi ad EFORMA o al proprio rivenditore di fiducia per ricevere maggiori informazioni. EFORMA si riserva di apportare modifiche e/o migliorie di carattere tecnico ed estetico ai propri modelli e prodotti in qualsiasi momento e senza preavviso. / *Attention: the final product may show slight variations in colour compared to the samples supplied by the company. The colours displayed are indicative and can vary in reality. Please contact EFORMA or your preferred retailer for more information. EFORMA reserves the right to change and/or apply technical and esthetical improvements to its models and products at any time without any notice.*

Metallo/Metal

I metalli della nostra collezione vengono verniciati a polvere così da rivestire le nostre superfici a scopo decorativo e protettivo. Lo spessore finale della verniciatura a polveri, risulta particolarmente elevata contribuendo ad una serie di rilevanti vantaggi sul prodotto verniciato: resistenza meccanica, resistenza agli agenti corrosivi, scarsa infiammabilità, precisione nell'applicazione. Le verniciature a polveri utilizzate sono totalmente atossiche e prive di solventi, per questo motivo la verniciatura a polveri è una lavorazione ECO-FRIENDLY, a bassissimo impatto ambientale. Disponibile la versione cromata dove il metallo o l'alluminio vengono rivestiti di cromo, conferendogli così durezza, resistenza chimica e resistenza all'ossidazione. / *The metals in our collection are powder coated in order to coat our surfaces for decorative and protective purposes. The final thickness of the powder coating is particularly high contributing to a series of advantages for the painted product: mechanical resistance, resistance to corrosive agents, low flammability, precision in the application. The powder coatings used are non-toxic and solvent-free, for this reason powder coating is an ECO-FRIENDLY process, with a very low environmental impact. The chrome version is available where the metal or aluminum is coated with chrome, giving it hardness, chemical resistance and resistance to oxidation.*



V01 - Nero/Black



V02 - Bianco/White



V03 - Antracite/Anthracite



V04 - Titanio/Titanium



V05 - Bronzo/Bronze



V06 - Oro/Gold



CRO - Cromo/Chrome



CRN - Cromo Nero/
Black Chrome



ASP - Alluminio Spazzolato/
Polished Aluminium



Legno/Wood

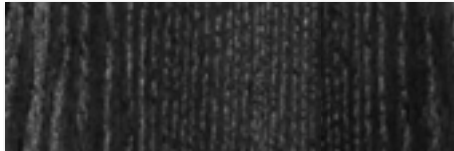
Il legno che viene utilizzato è tra i migliori che esistono sul mercato europeo. Viene lavorato con le migliori tecniche garantendo così resistenza e durata. *The wood which is used is one of the best available in European markets. It is worked with the best techniques guaranteeing resistance and durability.*

LEGNO MASSELLO/SOLID WOOD

Il legno utilizzato è un materiale di pregio che si caratterizza principalmente per la resistenza all'usura e per l'estetica. Durante il suo ciclo di crescita, sviluppo e maturazione, il legno si evolve nelle sue qualità come il cambio nel colore, nei nodi, e nelle vene. Essendo un materiale vivo, e naturale, può presentare delle variazioni di vene e di tonalità. *The wood used is a valuable material that is mainly characterized by its wear resistance and its aesthetics. During its cycle of growth, development and maturation, the wood's qualities. Evolve showing a change in color, in the knots, and in the veins. Being a living, natural material, it can present variations in veins and shades.*



FVC - Frassino tinto Noce Canaletto/
Canaletto Walnut stained Ash



FNR - Frassino tinto Nero/Black stained Ash



FTM - Frassino tinto Testa di Moro/
Dark Brown stained Ash

Finiture imbottiture / Upholstery Finishes

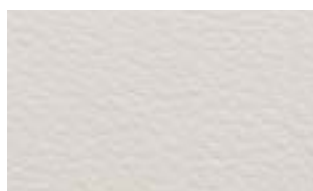
Rivestimento in ecopelle / Covering in eco-leather



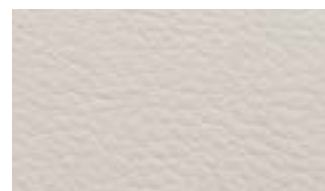
1 Bianco



2 Latte



25 Panna



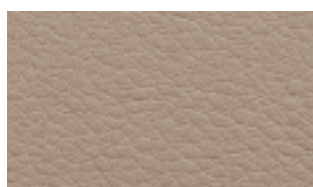
9 Avorio



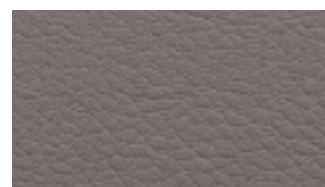
11 Beige



13 Canapa



12 Beige scuro



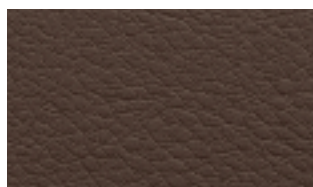
14 Fango



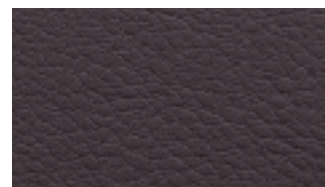
15 Tortora



30 Tabacco



31 Marrone scuro



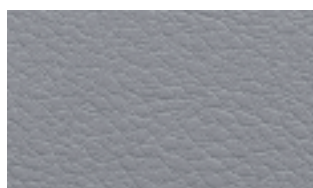
16 Testa di moro



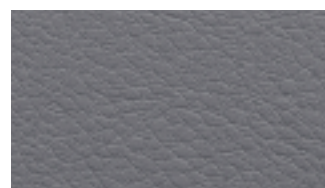
4 Grigio chiaro



5 Grigio



6 Cenere



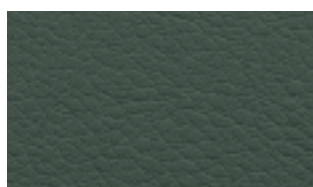
7 Antracite



56 Oceano



8 Nero



24 Verde scuro



23 Verde salvia



39 Bordeaux



35 Rosso

Rivestimento in econabuk / Covering in eco-nabuk



15 Bianco



1 Beige



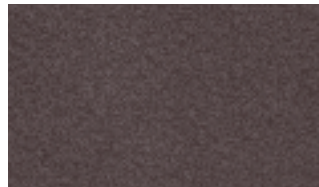
2 Marrone



3 Fango



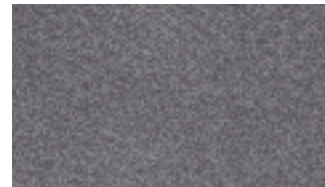
4 Cioccolato



5 Testa di moro



13 Grigio



6 Antracite



17 Blu



16 Bordeaux



11 Viola



12 Vinaccia



10 Ottanio

Rivestimento in econabuk / Covering in eco-nabuk



15 Bianco



1 Beige



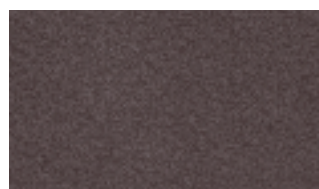
2 Marrone



3 Fango



4 Cioccolato



5 Testa di moro



13 Grigio



6 Antracite



17 Blu



16 Bordeaux



11 Viola



12 Vinaccia

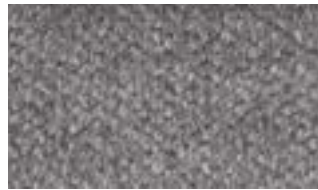


10 Ottanio

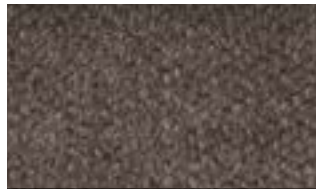
Rivestimento in tessuto A / *Covering fabric A*



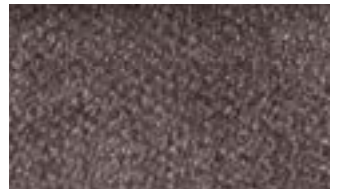
A 100



A 101



A 102



A 103



A 104



A 105



A 106



A 107



A 200



A 202



A 203



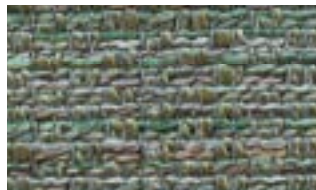
A 204



A 301



A 302



A 303

Rivestimento in tessuto B / Covering in fabric B



B 200



B 201



B 202



B 203



B 204



B 205



B 300



B 301



B 302



B 303



B 304



B 305



B 400



B 401



B 402



B 403



B 404



B 405



B 128



B 108



B 139



B 103



B 136



B 123



Rivestimento in pelle / *Covering in leather*



5000 Bianco



5518 Latte



5508 Avorio



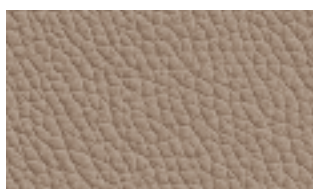
5480 Panna



5528 Beige



5320 Beige scuro



9034 Creta



5502 Avana



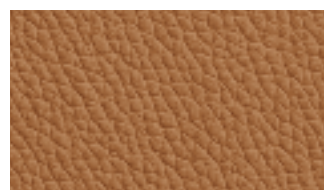
5414 Marrone



5522 Tortora



5504 Fango



5070 Nocciola



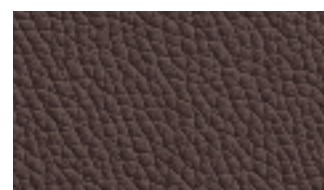
5110 Tabacco



5090 Marrone chiaro



5400 Marrone scuro



9030 Cioccolato



5270 Testa di moro



5300 Nero



5402 Grigio chiaro



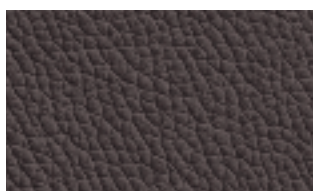
2256 Ghiaccio



5280 Cenere



5290 Grigio medio



5310 Antracite



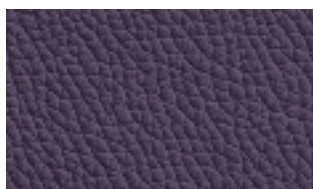
5200 Rosso



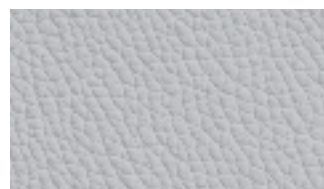
5210 Bordeaux



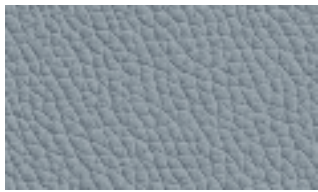
5460 Mora



5406 Vinaccia



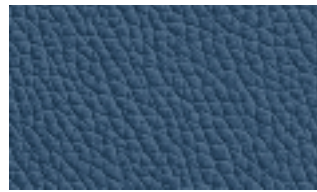
5420 Grigio



5416 Avio



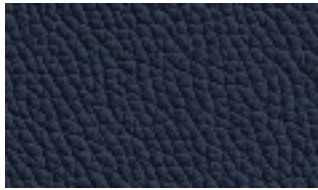
5428 Ottanio



9031 Blu



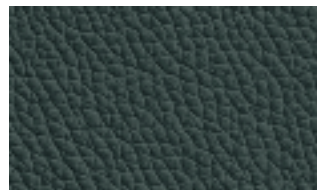
9021 Oceano



5431 Blu notte



5120 Verde salvia

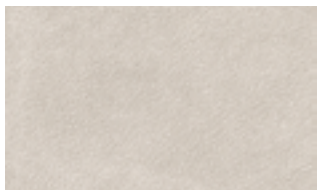


5150 Verde bosco



9045 Muschio

Rivestimento in pelle nabuk / *Covering in nabuk leather*



100 Sabbia



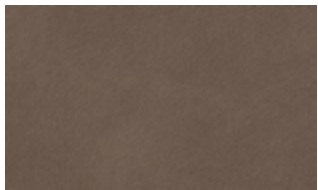
101 Conchiglia



102 Seppia



103 Terra



110 Marrone



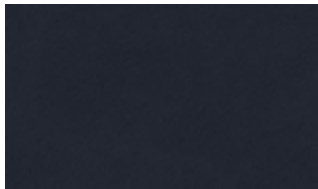
105 Marrone scuro



104 Salvia



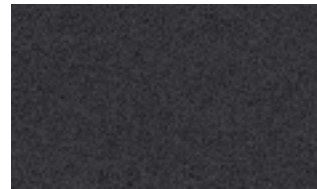
106 Orione



107 Oceano



108 Grigio



109 Antracite

Finiture dettagli / *Detail finishes*

Cordino in ecopelle e Zip / *Piping eco-leather and Zip*



1 Bianco



7 Antracite



8 Nero



11 Beige



14 Fango



16 Testa di Moro