

MAX DIAMOND_base metallo / *MAX DIAMOND_metal base*

Design Antoy Filips

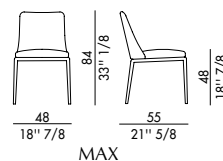


Max Diamond con base in metallo è la sedia elegante e versatile che si adatta a contesti moderni formali ed informali. Questa sedia elegante si distingue dal modello Max Diamond con base in legno per la differenza del materiale utilizzato per realizzare le quattro gambe di sostegno della seduta, venendo così incontro a due esigenze di stile differenti. Progettata dal designer Antoy Filips, la sedia Max Diamond con base in metallo può essere concepita anche come poltroncina imbottita, resa unica dal pregiato schienale trapuntato. Il rivestimento, non sfoderabile, è disponibile a scelta in pelle, ecopelle o tessuto. Questo complemento d'arredo raffinato e prezioso può essere collocato perfettamente in ambienti del vivere quotidiano, come living room o sale da pranzo, o anche in ambiti lavorativi legati all'hospitality come ristoranti, alberghi o locali. La linea di sedie e poltroncine Max comprende una vasta possibilità di scegliere a seconda delle esigenze di stile: Max Deluxe con base in legno o metallo, Max con base in legno o con base in metallo. Ora arricchita da una versione con seduta più larga e profonda: Max L.

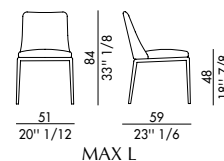
Max Diamond with metal base is the elegant and versatile chair that fits both formal and informal modern contexts. This stylish chair is distinguished from the Max Diamond model with a wooden base by the difference in material used to make the four support legs of the seat, thus meeting two different style needs. Designed by the designer Antoy Filips, the Max Diamond chair with a metal base can also be conceived as a padded armchair, made unique by the precious quilted backrest. The non-removable upholstery is available in a choice of leather, eco-leather, or fabric. This refined and precious piece of furniture can be perfectly placed in everyday living spaces such as living rooms or dining rooms, or even in hospitality-related workspaces such as restaurants, hotels, or bars. The Max line of chairs and armchairs includes a wide range of options to choose from according to style needs: Max Deluxe with a wooden or metal base, Max with a wooden or metal base. Now enriched by a version with a wider and deeper seat: Max L.

eforma
DESIGN ITALIANO

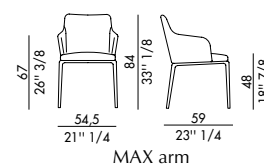
Informazioni tecniche / Technical informations



55
21" 5/8



59
23" 1/6



Sedia e poltroncina imbottita, MAX L versione large, MAX DIAMOND con schienale trapuntato, base in metallo verniciato.

Nero	V01	Titanio	V04
Bianco	V02	Bronzo	V05
Antracite	V03	Oro	V06

Upholstered chair and armchair, MAX L larger version, MAX DIAMOND with a quilted backrest, metal painted base.

Black	V01	Titanium	V04
White	V02	Bronze	V05
Anthracite	V03	Gold	V06

Rivestimento non sfoderabile.

MAX		H 140 cm x L 120 cm		1,80 m ²
MAX L		H 140 cm x L 120 cm		2,00 m ²
MAX arm		H 140 cm x L 130 cm		2,70 m ²

Cover not removable.

MAX		H 140 cm x L 120 cm		1,80 m ²
MAX L		H 140 cm x L 120 cm		2,00 m ²
MAX arm		H 140 cm x L 130 cm		2,70 m ²

FINITURE/FINISHES

Attenzione: il prodotto finito può presentare delle lievi variazioni di colore rispetto ai campioni forniti dall'azienda. I colori visualizzati sono puramente indicativi e possono variare rispetto alla realtà. Rivolgersi ad EFORMA o al proprio rivenditore di fiducia per ricevere maggiori informazioni. EFORMA si riserva di apportare modifiche e/o migliorie di carattere tecnico ed estetico ai propri modelli e prodotti in qualsiasi momento e senza preavviso. / *Attention: the final product may show slight variations in colour compared to the samples supplied by the company. The colours displayed are indicative and can vary in reality. Please contact EFORMA or your preferred retailer for more information. EFORMA reserves the right to change and/or apply technical and esthetical improvements to its models and products at any time without any notice.*

Metallo/Metal

I metalli della nostra collezione vengono verniciati a polvere così da rivestire le nostre superfici a scopo decorativo e protettivo. Lo spessore finale della verniciatura a polveri, risulta particolarmente elevata contribuendo ad una serie di rilevanti vantaggi sul prodotto verniciato: resistenza meccanica, resistenza agli agenti corrosivi, scarsa infiammabilità, precisione nell'applicazione. Le verniciature a polveri utilizzate sono totalmente atossiche e prive di solventi, per questo motivo la verniciatura a polveri è una lavorazione ECO-FRIENDLY, a bassissimo impatto ambientale. Disponibile la versione cromata dove il metallo o l'alluminio vengono rivestiti di cromo, conferendogli così durezza, resistenza chimica e resistenza all'ossidazione. / *The metals in our collection are powder coated in order to coat our surfaces for decorative and protective purposes. The final thickness of the powder coating is particularly high contributing to a series of advantages for the painted product: mechanical resistance, resistance to corrosive agents, low flammability, precision in the application. The powder coatings used are non-toxic and solvent-free, for this reason powder coating is an ECO-FRIENDLY process, with a very low environmental impact. The chrome version is available where the metal or aluminum is coated with chrome, giving it hardness, chemical resistance and resistance to oxidation.*



V01 - Nero/Black



V02 - Bianco/White



V03 - Antracite/Anthracite



V04 - Titanio/Titanium



V05 - Bronzo/Bronze



V06 - Oro/Gold



CRO - Cromo/Chrome



CRN - Cromo Nero/
Black Chrome



ASP - Alluminio Spazzolato/
Polished Aluminium



Legno/Wood

Il legno che viene utilizzato è tra i migliori che esistono sul mercato europeo. Viene lavorato con le migliori tecniche garantendo così resistenza e durata. *The wood which is used is one of the best available in European markets. It is worked with the best techniques guaranteeing resistance and durability.*

LEGNO MASSELLO/SOLID WOOD

Il legno utilizzato è un materiale di pregio che si caratterizza principalmente per la resistenza all'usura e per l'estetica. Durante il suo ciclo di crescita, sviluppo e maturazione, il legno si evolve nelle sue qualità come il cambio nel colore, nei nodi, e nelle vene. Essendo un materiale vivo, e naturale, può presentare delle variazioni di vene e di tonalità. *The wood used is a valuable material that is mainly characterized by its wear resistance and its aesthetics. During its cycle of growth, development and maturation, the wood's qualities. Evolve showing a change in color, in the knots, and in the veins. Being a living, natural material, it can present variations in veins and shades.*



FVC - Frassino tinto Noce Canaletto/
Canaletto Walnut stained Ash



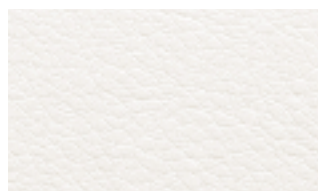
FNR - Frassino tinto Nero/Black stained Ash



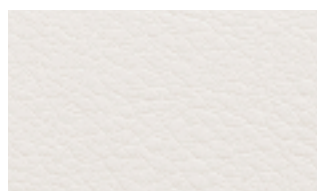
FTM - Frassino tinto Testa di Moro/
Dark Brown stained Ash

Finiture imbottiture / Upholstery Finishes

Rivestimento in ecopelle / Covering in eco-leather



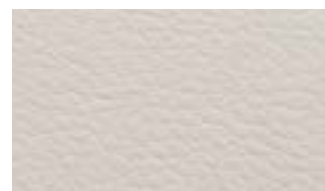
1 Bianco



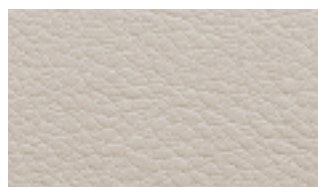
2 Latte



25 Panna



9 Avorio



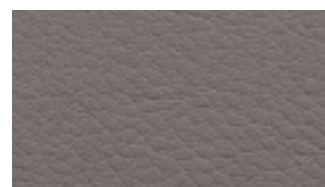
11 Beige



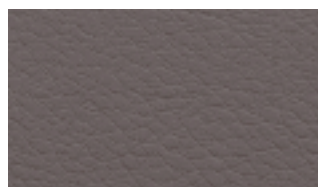
13 Canapa



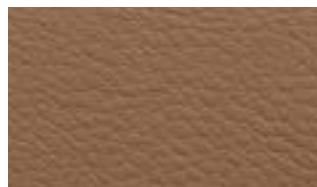
12 Beige scuro



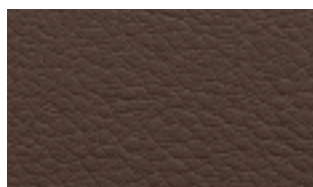
14 Fango



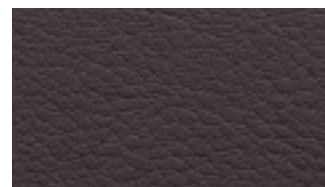
15 Tortora



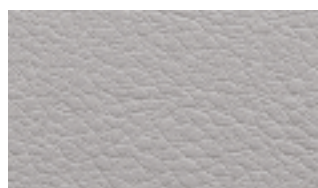
30 Tabacco



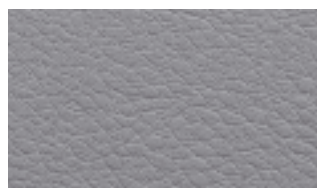
31 Marrone scuro



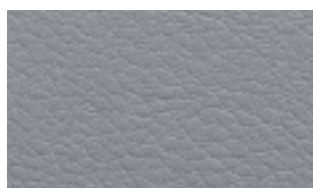
16 Testa di moro



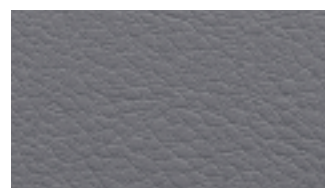
4 Grigio chiaro



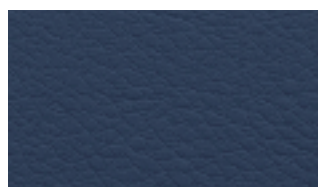
5 Grigio



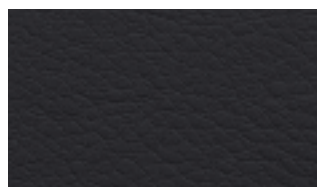
6 Cenere



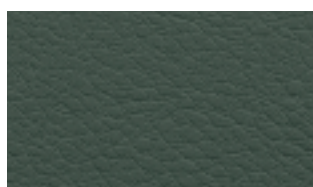
7 Antracite



56 Oceano



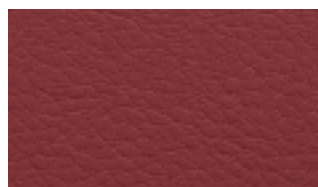
8 Nero



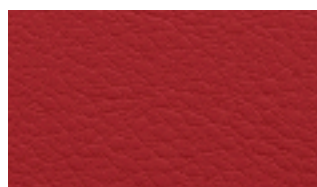
24 Verde scuro



23 Verde salvia

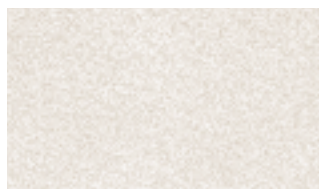


39 Bordeaux



35 Rosso

Rivestimento in econabuk / Covering in eco-nabuk



15 Bianco



1 Beige



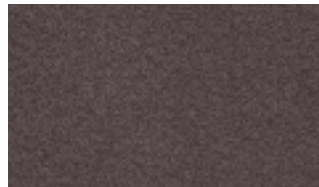
2 Marrone



3 Fango



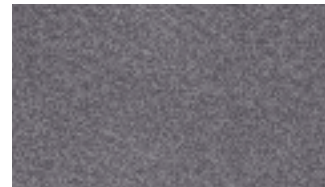
4 Cioccolato



5 Testa di moro



13 Grigio



6 Antracite



17 Blu



16 Bordeaux



11 Viola



12 Vinaccia



10 Ottanio

Rivestimento in econabuk / Covering in eco-nabuk



15 Bianco



1 Beige



2 Marrone



3 Fango



4 Cioccolato



5 Testa di moro



13 Grigio



6 Antracite



17 Blu



16 Bordeaux



11 Viola



12 Vinaccia



10 Ottanio

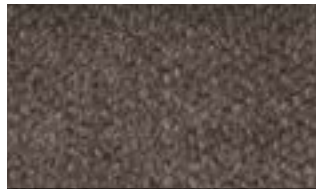
Rivestimento in tessuto A / Covering fabric A



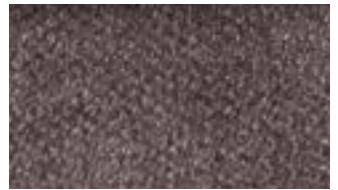
A 100



A 101



A 102



A 103



A 104



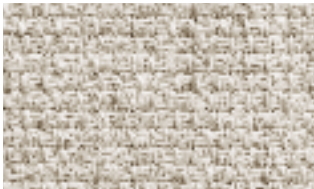
A 105



A 106



A 107



A 200



A 202



A 203



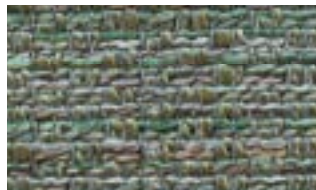
A 204



A 301



A 302

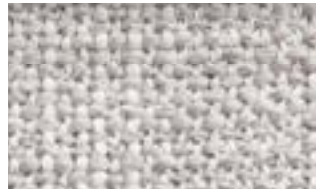


A 303

Rivestimento in tessuto B / Covering in fabric B



B 200



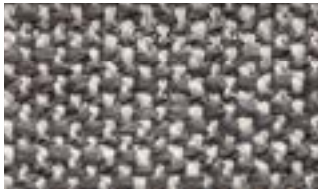
B 201



B 202



B 203



B 204



B 205



B 300



B 301



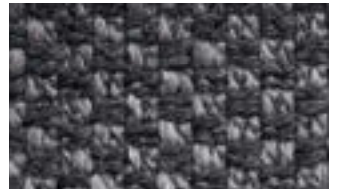
B 302



B 303



B 304



B 305



B 400



B 401



B 402



B 403



B 404



B 405



B 128



B 108



B 139



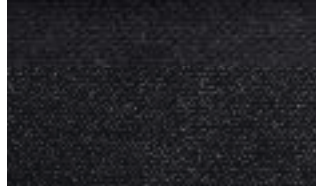
B 103



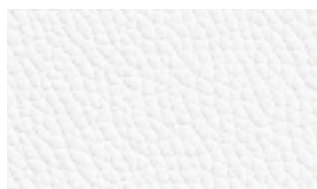
B 136



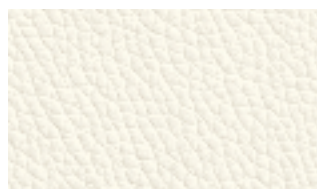
B 123



Rivestimento in pelle / *Covering in leather*



5000 Bianco



5518 Latte



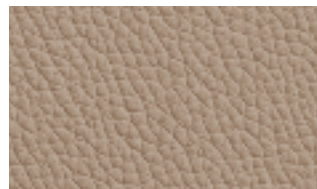
5508 Avorio



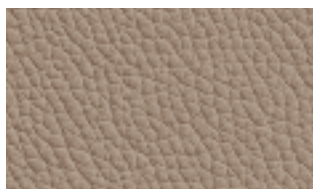
5480 Panna



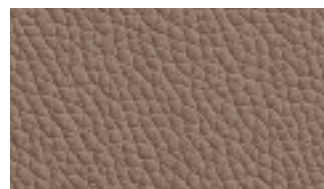
5528 Beige



5320 Beige scuro



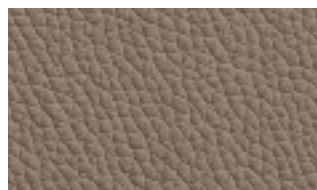
9034 Creta



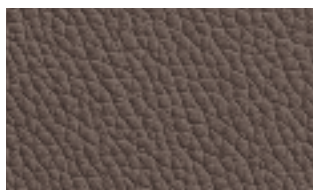
5502 Avana



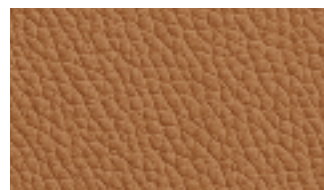
5414 Marrone



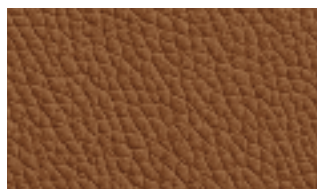
5522 Tortora



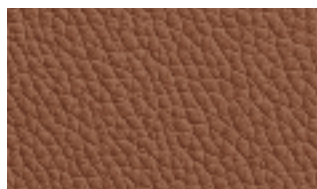
5504 Fango



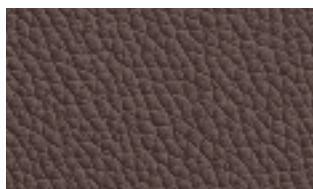
5070 Nocciola



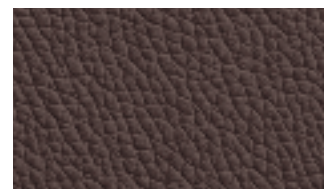
5110 Tabacco



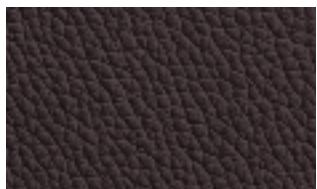
5090 Marrone chiaro



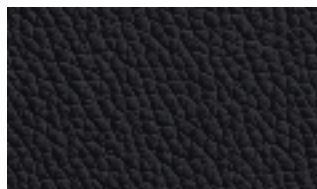
5400 Marrone scuro



9030 Cioccolato



5270 Testa di moro



5300 Nero



5402 Grigio chiaro



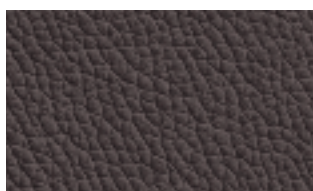
2256 Ghiaccio



5280 Cenere



5290 Grigio medio



5310 Antracite



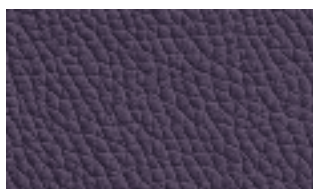
5200 Rosso



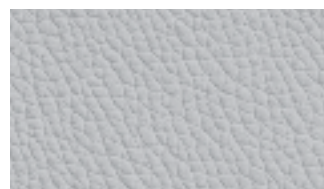
5210 Bordeaux



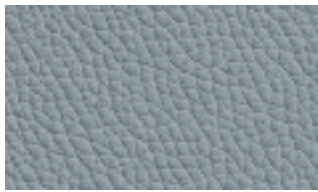
5460 Mora



5406 Vinaccia



5420 Grigio



5416 Avio



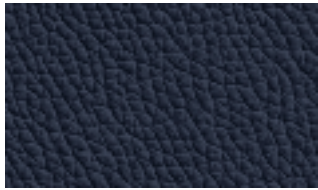
5428 Ottanio



9031 Blu



9021 Oceano



5431 Blu notte



5120 Verde salvia

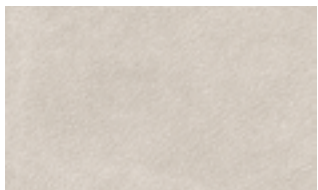


5150 Verde bosco



9045 Muschio

Rivestimento in pelle nabuk / *Covering in nabuk leather*



100 Sabbia



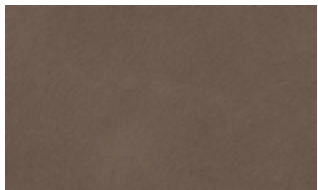
101 Conchiglia



102 Seppia



103 Terra



110 Marrone



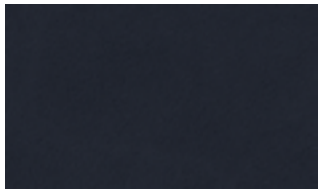
105 Marrone scuro



104 Salvia



106 Orione



107 Oceano



108 Grigio



109 Antracite

Finiture dettagli / *Detail finishes*

Cordino in ecopelle e Zip / *Piping eco-leather and Zip*



1 Bianco



7 Antracite



8 Nero



11 Beige



14 Fango



16 Testa di Moro