



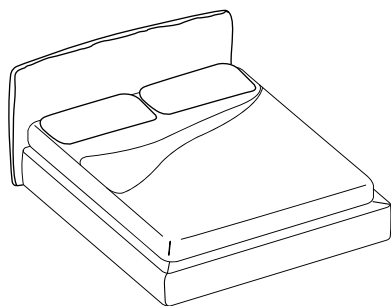
Pearl

The simple, yet highly characteristic headboard is further enhanced by the sartorial quality of the contrasting edge stitching. Soft upholstery and the pleasant feel of linen create an inviting sense of well-being. Headboard and bed frame in fabric or eco-leather, matching or contrast headboard stitching. Available in versions with or without storage base.

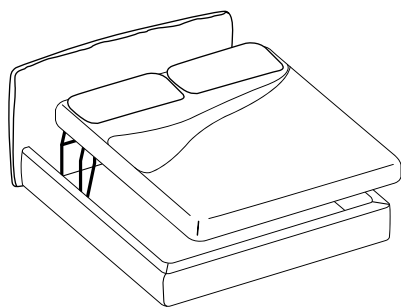
La forma semplice ma piena di personalità della testata è ulteriormente evidenziata dalla cucitura perimetrale a contrasto, di qualità sartoriale. La soffice imbottitura e la piacevole texture del lino, generano un'accogliente sensazione di benessere. Testiera e giroletto in tessuto o ecopelle, bordo testiera colore o a contrasto. Disponibile nelle versioni con o senza contenitore.

TECHNICAL DETAILS

Dimensions



	Bed base	Internal dimesions	External dimensions
	140x200 55 1/8 x 78 5/8	142x202 55 7/8 x 79 4/8	L 160 H 90 P 220 W 63 H 35 3/8 D 86 5/8
	150x200 59 x 78 5/8	152x202 59 7/8 x 79 4/8	L 170 H 90 P 220 W 66 5/8 H 35 3/8 D 86 5/8
	160x200 63 x 78 5/8	162x202 63 5/8 x 79 4/8	L 180 H 90 P 220 W 70 7/8 H 35 3/8 D 86 5/8
	180x200 70 7/8 x 78 5/8	182x202 71 5/8 x 79 4/8	L 200 H 90 P 220 W 78 5/8 H 35 3/8 D 86 5/8
AU – USA QS	153x203 60 2/8 x 79 7/8	155x205 61 x 80 5/8	L 173 H 90 P 223 W 68 1/8 H 35 3/8 D 87 5/8
AU KS	183x203 72 x 79 7/8	185x205 72 7/8 x 80 5/8	L 203 H 90 P 223 W 79 7/8 H 35 3/8 D 87 5/8
USA KS	193x203 76 x 79 7/8	195x205 76 5/8 x 80 5/8	L 213 H 90 P 223 W 83 7/8 H 35 3/8 D 87 5/8



	Bed base + storage	Internal dimesions	External dimensions
	140x200 55 1/8 x 78 5/8	142x202 55 7/8 x 79 4/8	L 160 H 90 P 220 W 63 H 35 3/8 D 86 5/8
	150x200 59 x 78 5/8	152x202 59 7/8 x 79 4/8	L 170 H 90 P 220 W 66 5/8 H 35 3/8 D 86 5/8
	160x200 63 x 78 5/8	162x202 63 5/8 x 79 4/8	L 180 H 90 P 220 W 70 7/8 H 35 3/8 D 86 5/8
	180x200 70 7/8 x 78 5/8	182x202 71 5/8 x 79 4/8	L 200 H 90 P 220 W 78 5/8 H 35 3/8 D 86 5/8

FINISHES

Alveo fabric



111



130



200



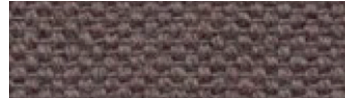
430



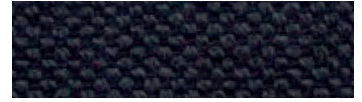
600



602



603



632



705



802



901

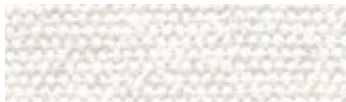


902

Composition: 100% recycled cotton
Abrasion: app. 25.000 Martindale
Cleaning and care:



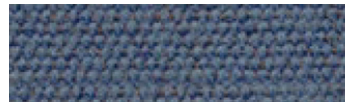
Biacco fabric



53



14



06



13



11



15

Composition: 75% recycled CO, 25% PL
Abrasion: app. 40.000 Martindale
Cleaning and care:



Borgo fabric



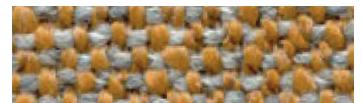
15



17



37



92



98



93



25



76



137

Composition: PC 51% , LI 11%, PL 11%,
VI 11%, CO 16%
Abrasion: app. 25.000 Martindale
Cleaning and care:



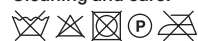
FINISHES

Canvas 2 (Kvadrat) fabric



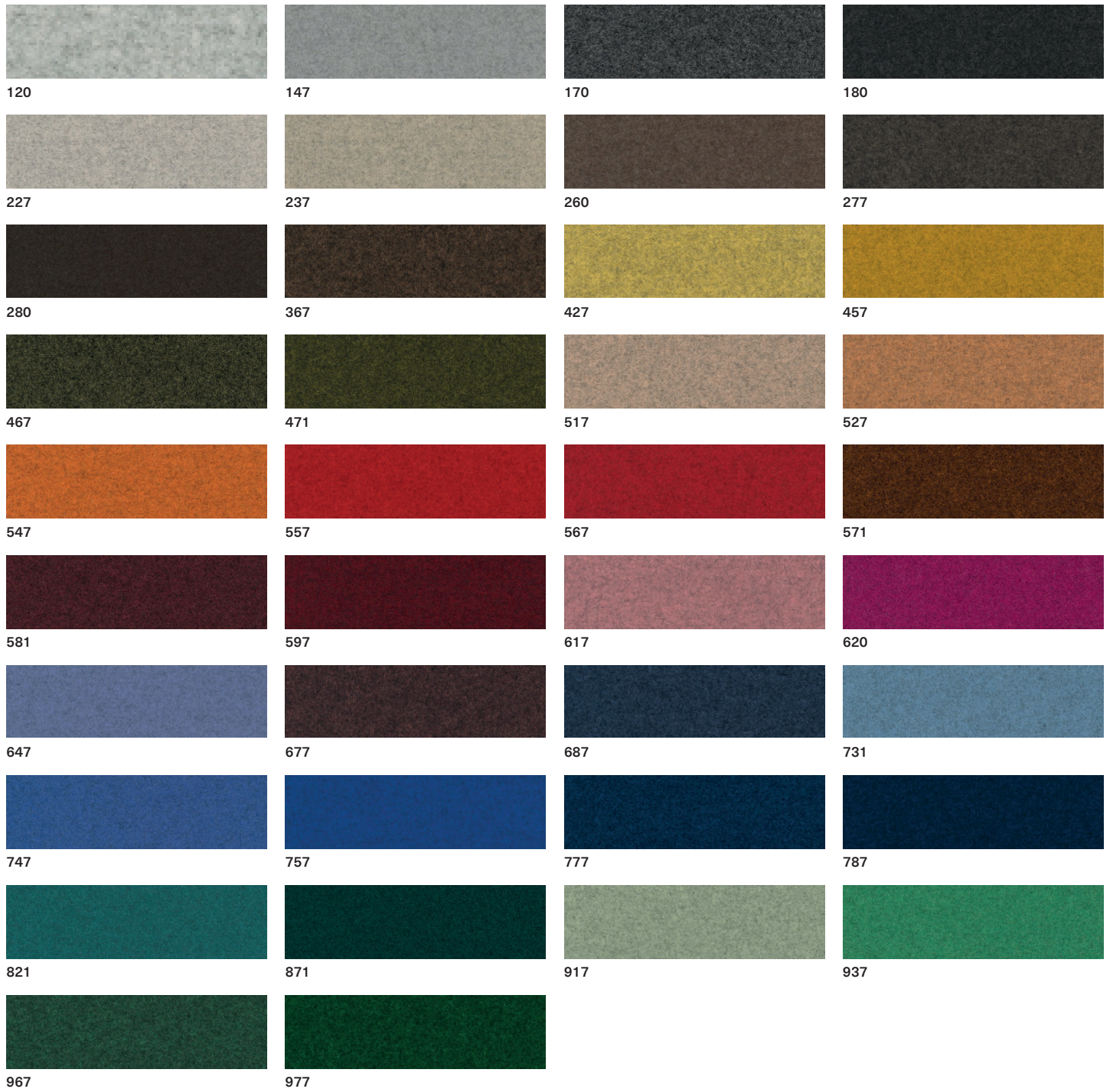
Design: Giulio Ridolfo
Composition: 90% new wool,
worsted, 10% nylon

Abrasion: app. 100.000 Martindale
Cleaning and care:



FINISHES

Divina Melange 3 (Kvadrat) fabric



Design: Finn Sködt
 Composition: 100% new wool
 Abrasion: app. 45.000 Martindale
 Cleaning and care:



FINISHES

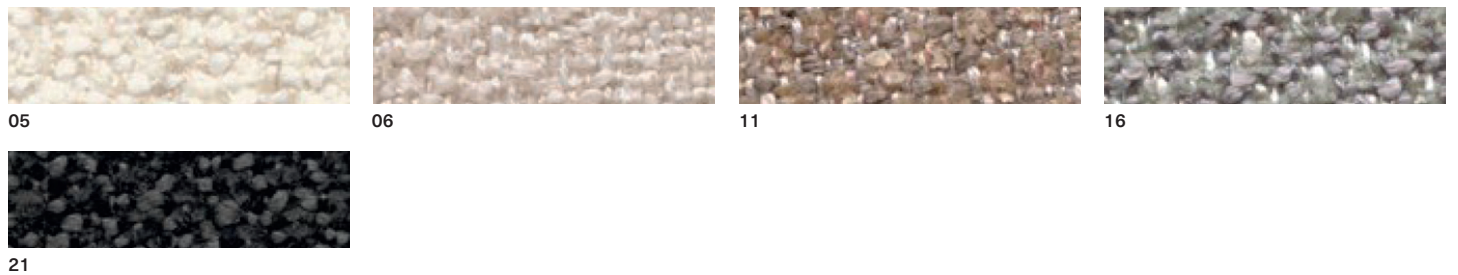
Field 2 (Kvadrat) fabric



Design: Alfredo Häberli
 Composition: 100% Trevira CS
 Abrasion: app. 100.000 Martindale

Cleaning and care:

Greto fabric




Composition: PL 33% , PC 25%,
 VI 23%, CO 10%, LI 9%
 Abrasion: app. 50.000 Martindale

Cleaning and care:

FINISHES

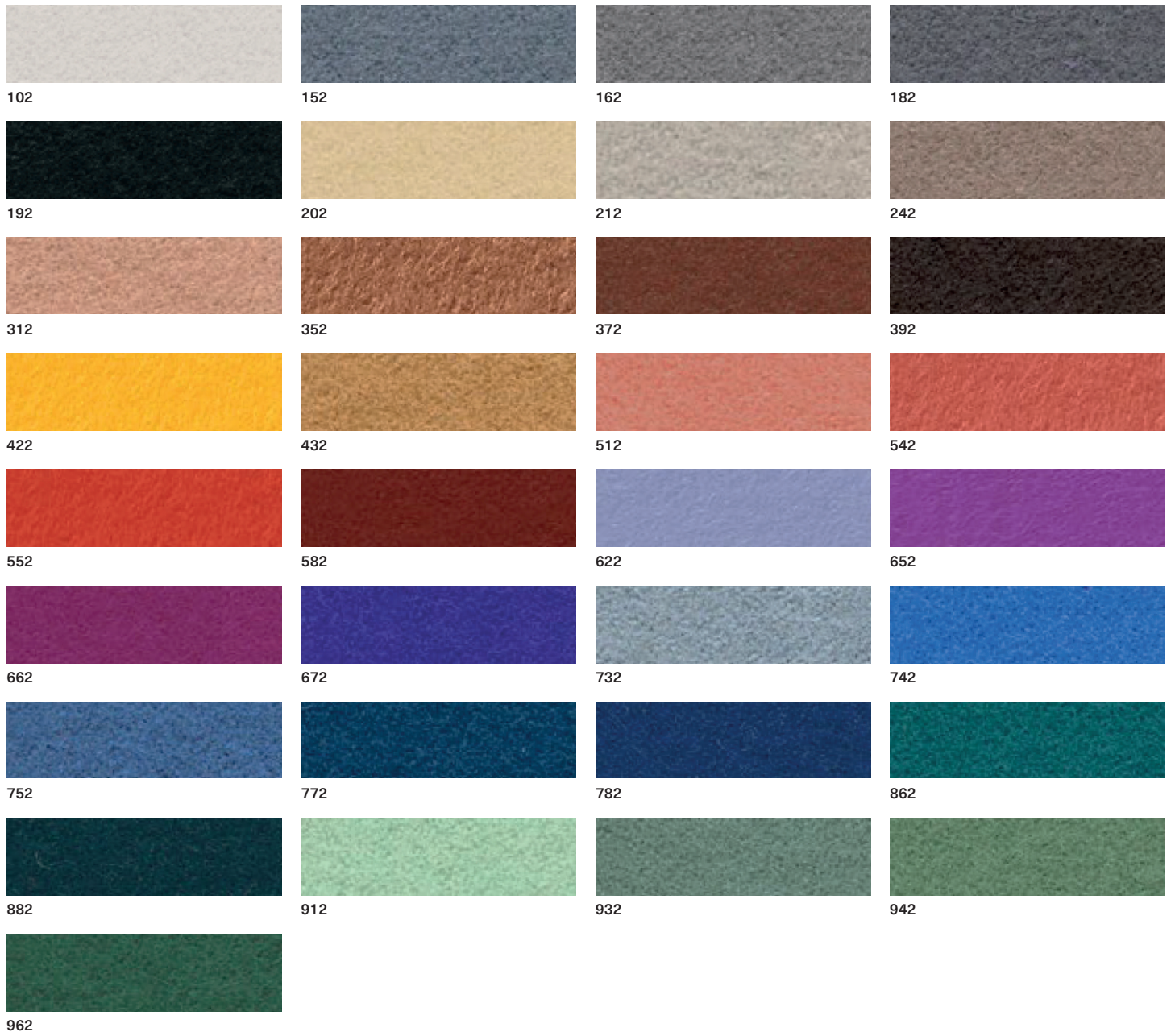
Hallingdal 65 (Kvadrat) fabric



Design: Nanna Ditzel
 Composition: 70% new wool,
 30% viscose
 Abrasion: app. 100.000 Martindale
 Cleaning and care:


FINISHES

Hero 2 (Kvadrat) fabric



Composition: 96% new wool, 4% nylon
 Abrasion: app. 45.000 Martindale

Cleaning and care:



Merit (Maharam) fabric



Composition: 76% post-consumer recycled polyester, 24% polyester
 Abrasion: app. 85.000 Martindale
 Cleaning and care:



FINISHES

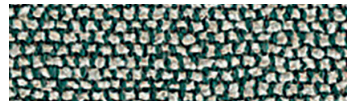
Moss (Sahco) fabric



0001



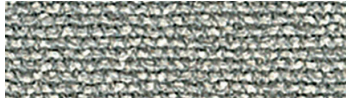
0002



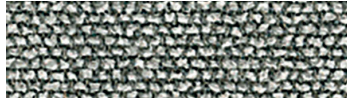
0003



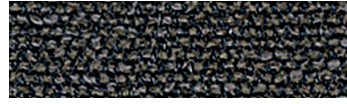
0004



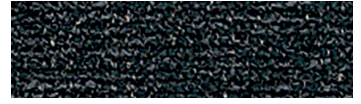
0005



0006



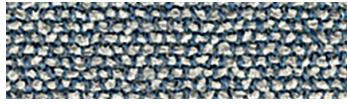
0007



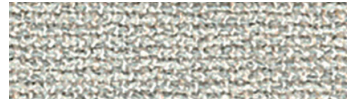
0008



0009



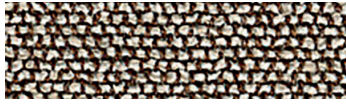
0010



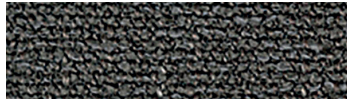
0011



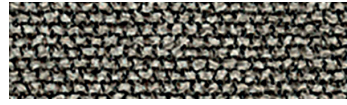
0012



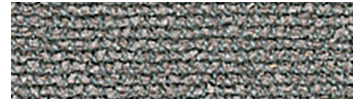
0013



0014



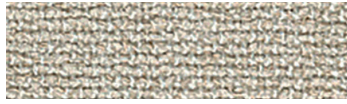
0015



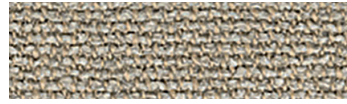
0016



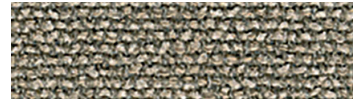
0017



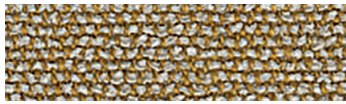
0018



0019



0020



0021



0022

Design: Vincent Van Duysen
Composition: 52% Cotton,
22% Viscose, 14% Acrylic,
6% Linen, 3% Polyester, 3% Nylon
Weight: 920 g/lin.m
Durability: 50.000 Martindale

Pilling: 4-5
Lightfastness: 6-7
Cleaning and care:
⊗ ⊗ ⊗ ⊗ ⊗

Orsetto (ONE Mario Sirtori) fabric



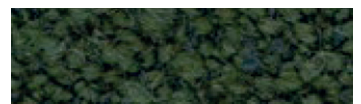
01/2



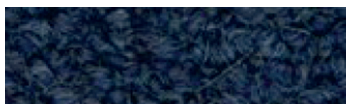
98/21



02/26



98/18



98/20



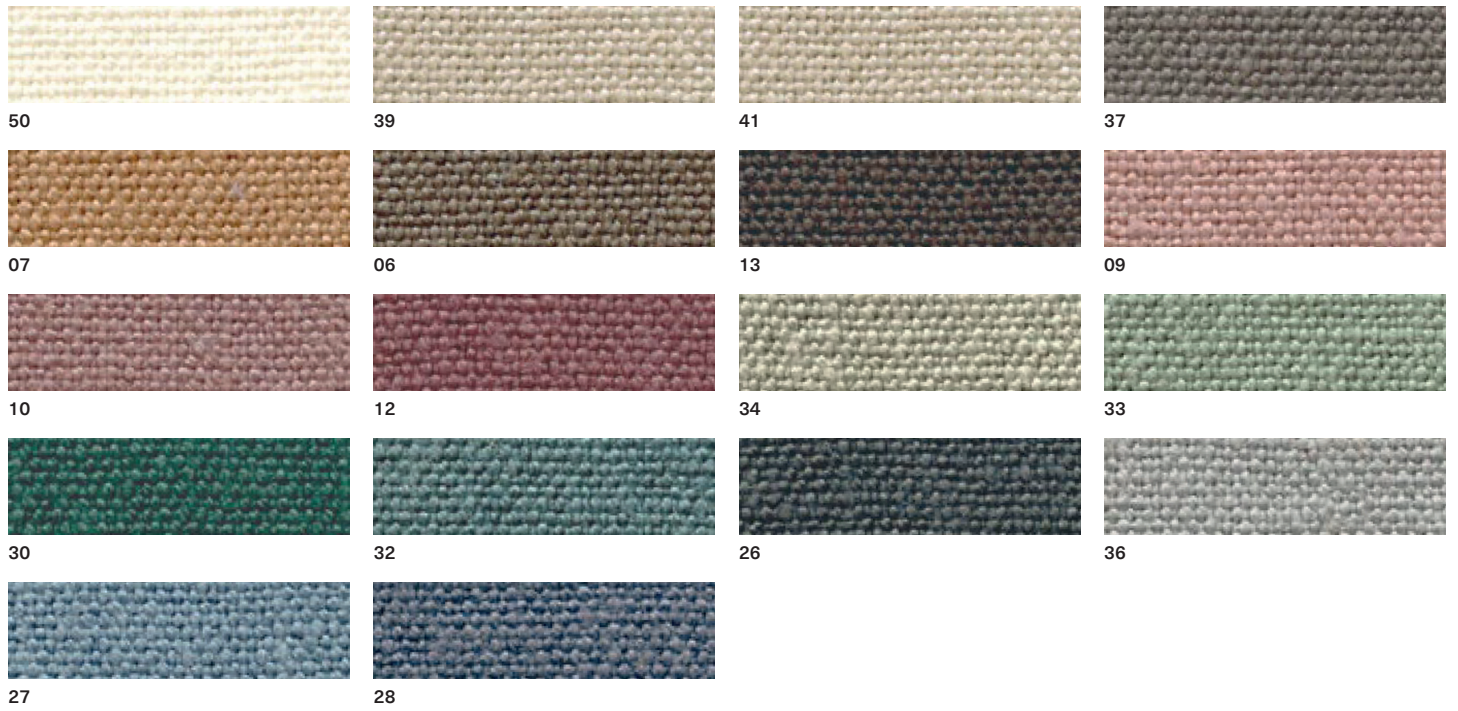
98/16

Composition: 34% Viscose, 33%
Acrylic, 17% Wool, 8% Polyester, 4%
Flax, 4% Cotton
Abrasion: app. 80.000 Martindale
Cleaning and care:

⊗ ⊗ ⊗ ⊗ ⊗

FINISHES

Parigi fabric



Composition: 100% linen
Abrasion: app. 30.000 Martindale

Cleaning and care:

Patio (Kvadrat) fabric



Design: Karina Nielsen Rios
Composition: 100% Trevira CS,
water repellent finish

Abrasion: app. 50.000 Martindale
Cleaning and care:

FINISHES

Remix 3 (Kvadrat) fabric



Composition: 90% new wool,
worsted, 10% nylon
Abrasion: app. 100.000 Martindale

Cleaning and care:



FINISHES

RePo 3D fabric



BIT 105



BIT 106



BIT 109



BIT 107



BIT 108



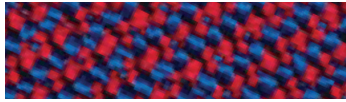
BIT 804



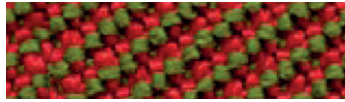
BIT 305



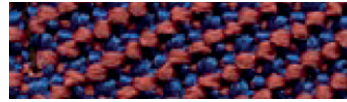
BIT 807



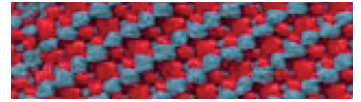
BIT 307



BIT 308



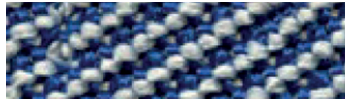
BIT 703



BIT 306



BIT 305



BIT 705



BIT 605



BIT 600

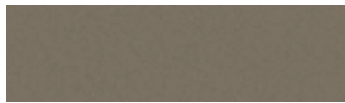
Composition: 98% recycled polyester,
2% LYCRA® elastomer
Abrasion: > 350.000 cicli, ISO 12947-2
Cleaning and care:



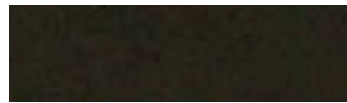
Scuba (Maharam) fabric



001



005



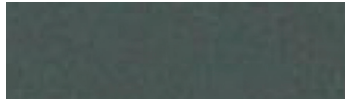
006



007



008



009



010



012



013



015



016



017



020



021



023

Composition: 100% polyurethane
(surface), 100% polyester (backing)
Abrasion: app. 100.000 Martindale
Cleaning and care:



FINISHES

Steelcut Trio 3 (Kvadrat) fabric



Design: Frans Dijkmeijer
and Giulio Ridolfo
Composition: 90% new wool,
worsted, 10% nylon
Abrasion: app. 100.000 Martindale
Cleaning and care:



FINISHES

Stipa fabric



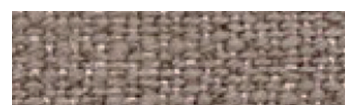
03



05



02



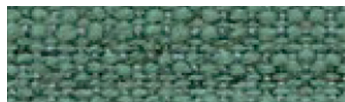
04



31



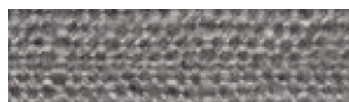
46



150



16



06



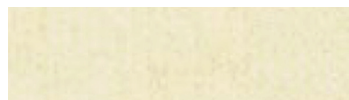
07

Composition: VI 34% , CO 31%, LI 15%,
PC 13%, PL 7%
Abrasion: app. 25.000 Martindale

Cleaning and care:



Vello fabric



01



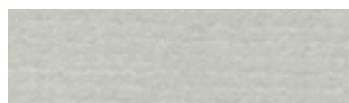
03



05



07



29



28



2002



26



14



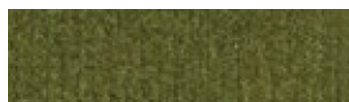
70



2007



58



1041

Composition: 100% Cotton
Abrasion: app. 70.000 Martindale

Cleaning and care:



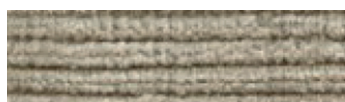
Verso fabric



01



03



51



05



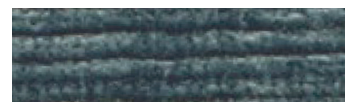
09



30



10



15

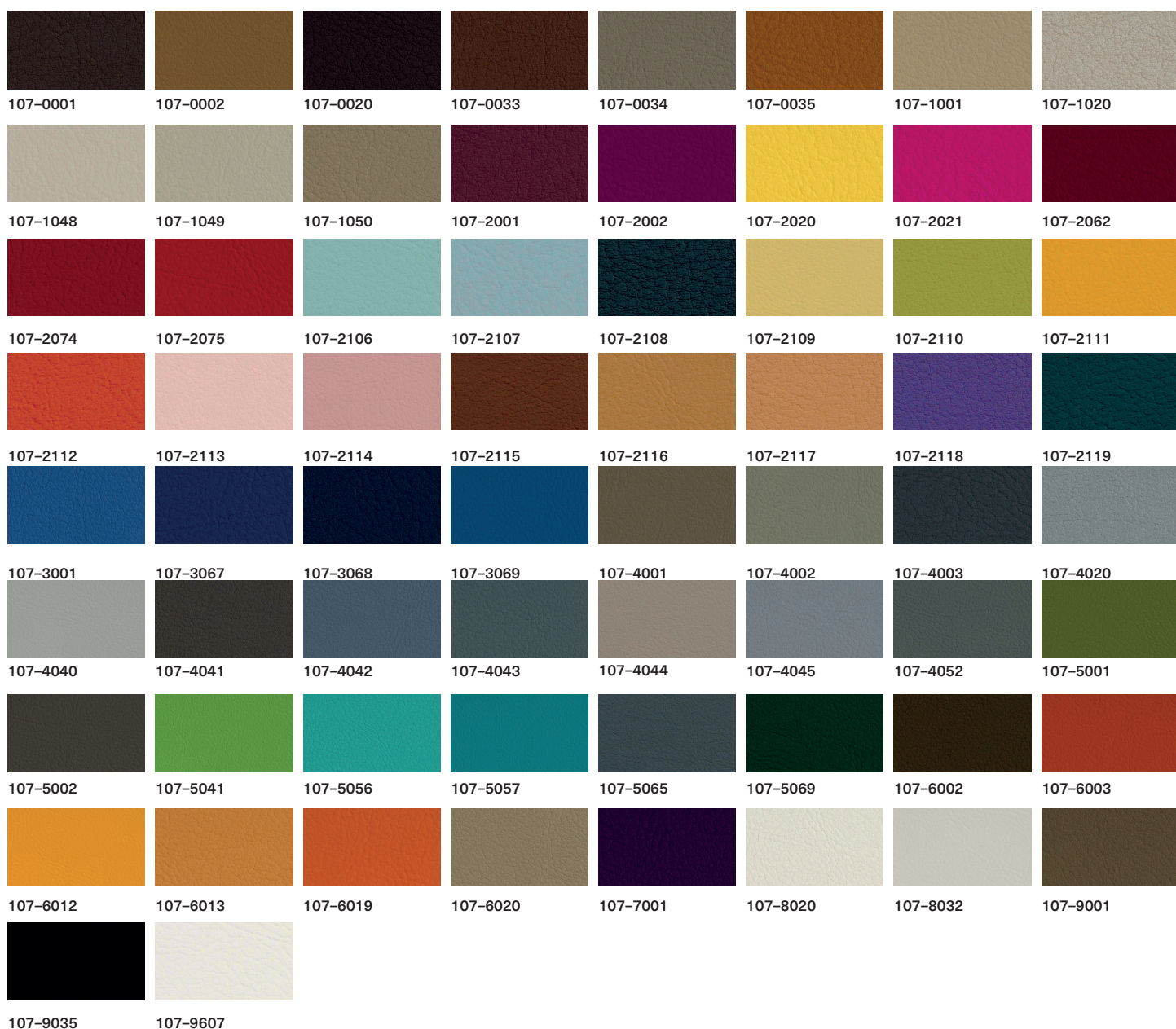
Composition: VI 34% , CO 31%, LI 15%,
PC 13%, PL 7%
Abrasion: app. 25.000 Martindale

Cleaning and care:



FINISHES

Valencia (Spradling) synthetic leather



Composition: Topcoat 100% vinyl,
backing 100% polyester Hi-Loft
Abrasion: app. 300.000 Martindale
Cleaning and care:



Shades of colour cannot be
reproduced exactly on printed paper.
MD House Srl is entitled to make
modifications at any time and without
prior notice.

Nella stampa su carta la tonalità dei
colori non può essere riprodotta
fedelmente. MD House Srl si riserva
la facoltà di apportare modifiche in
qualsiasi momento e senza preavviso.