

BONALDO

Youpi

Designer: **Fabrice Berrux**

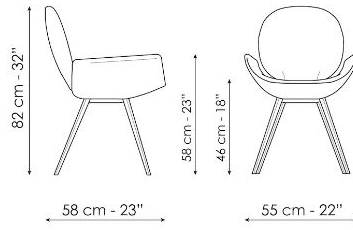
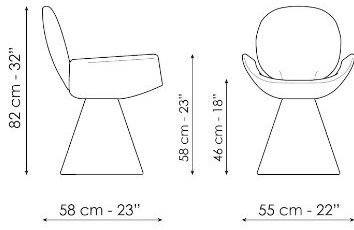


Seen from behind, the profile of the Youpi chair calls to mind the image of a stylized human figure, ready to welcome you in a comfortable embrace. Designed by Fabrice Berrux, what strikes the observer about the Youpi chair is its original shape, which adds style and a sense of lightness to any space. It consists of a series of different forms that combine to create

a harmonious ensemble thanks to the fabric or leather upholstery that completely covers it: the circular backrest flows into the large seat and the whole is supported by a flared conical base. The Youpi unique design chair is also available in a version with four metal legs.



Data sheet



Youpi

Width: 58cm

Depth: 55cm

Height: 82cm

Youpi - metal leg

Width: 58cm

Depth: 55cm

Height: 82cm

Finishes

LEGS

Metal



Painted metal
Mat white



Painted metal
Mat brown



Painted metal
Mat black



Painted metal
Mat dove grey

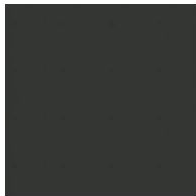


Painted metal
Supreme anthracite

Plus Metal



Painted metal
Mat bronze



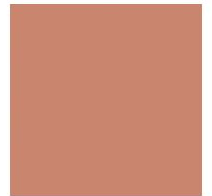
Painted metal
Mat lead



Painted metal
Mat pearl gold

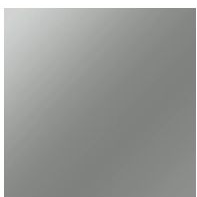


Painted metal
Mat brass



Painted metal
Mat copper

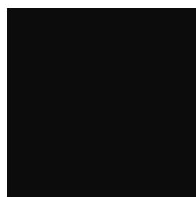
Special Metal



Metal finish
Clouded chrome



Metal finish
Brown nickel



Metal finish
Dark nickel

